

Mycale Growth data (g wet wt.)

Sponge I. D.	Date	Weighing	Wt in g Start	Sponge & Paper	Sponge, aper & Wi	Wt in g 1st Quarter	Change 1st Quarter	% Change 1st Quarter	Area cm2 Start	Area cm3 1st Quarter	Change 1st Quarter
S1a	03/11/05	1	2.630	3.870	5.270	3.735			54.49	42.94	
	03/11/05	2	2.830	3.830	5.260	3.739			53.51	41.30	
	03/11/05	Mean	2.730	3.850	5.265	3.737	1.007	36.9%	54.49	42.12	-12.370
S1b	03/11/05	1	5.204	6.193	7.472	2.868			45.89	38.66	
	03/11/05	2	5.217	6.205	7.472	2.860			45.71	38.47	
	03/11/05	Mean	5.211	6.199	7.472	2.864	-2.347	-45.0%	45.80	38.57	-7.235
S2a	03/11/05	1	4.888	5.886	7.145	2.502			62.41	24.46	
	03/11/05	2	4.896	5.896	7.153	2.500			62.67	24.25	
	03/11/05	Mean	4.892	5.891	7.149	2.501	-2.391	-48.9%	62.54	24.36	-38.185
S2b	03/11/05	1	3.160	4.159	5.557	3.845			53.58	31.25	
	03/11/05	2	3.163	4.168	5.554	3.842			54.47	31.63	
	03/11/05	Mean	3.162	4.164	5.556	3.844	0.682	21.6%	54.03	31.44	-22.585
S3a	03/11/05	1	4.727	5.758	7.580	2.102			47.90	24.05	
	03/11/05	2	4.767	5.757	7.598	2.104			47.86	24.13	
	03/11/05	Mean	4.747	5.758	7.589	2.103	-2.644	-55.7%	47.88	24.09	-23.790
S3b	03/11/05	1	3.585	4.567	6.245	3.446			42.89	38.81	
	03/11/05	2	3.565	4.568	6.248	3.458			42.81	34.53	
	03/11/05	Mean	3.575	4.568	6.247	3.452	-0.123	-3.4%	42.85	36.67	-6.180
S4a	03/11/05	1	3.093	4.083	5.068	2.290			38.20	29.45	
	03/11/05	2	3.107	4.085	5.077	2.299			38.05	29.38	
	03/11/05	Mean	3.100	4.084	5.073	2.295	-0.806	-26.0%	38.13	29.42	-8.710
S4b	03/11/05	1	2.800	3.811	4.820	2.601			36.90	25.40	
	03/11/05	2	2.808	3.814	4.825	2.604			37.16	25.50	
	03/11/05	Mean	2.804	3.813	4.823	2.603	-0.202	-7.2%	37.03	25.45	-11.580
S5a	03/11/05	1	2.363	3.352	4.354	Missing			55.67	Missing	
	03/11/05	2	2.369	3.361	4.358	Missing			55.56	Missing	
	03/11/05	Mean	2.366	3.357	4.356	Missing			55.62	Missing	
S5b	03/11/05	1	3.063	4.044	5.017	Missing			44.88	Missing	
	03/11/05	2	3.073	4.059	5.030	Missing			44.74	Missing	
	03/11/05	Mean	3.068	4.052	5.024	Missing			44.81	Missing	
S6a	03/11/05	1	3.210	4.203	5.234	3.185			49.28	45.56	
	03/11/05	2	3.208	4.182	5.215	3.191			49.28	45.83	
	03/11/05	Mean	3.209			3.188	-0.021	-0.7%	49.28	45.70	-3.585
S6b	03/11/05	1	2.342			2.611			39.67	45.560	
	03/11/05	2	2.354			2.620			39.69	45.830	
	03/11/05	Mean	2.348			2.616	0.268	11.4%	39.68	45.70	6.015
S7a	03/11/05	1	3.928			3.509			53.60	35.39	
	03/11/05	2	3.929			3.515			53.36	35.50	
	03/11/05	Mean	3.929			3.512	-0.417	-10.6%	53.48	35.45	-18.035
S7b	03/11/05	1	2.758			2.388			50.22	28.40	
	03/11/05	2	2.768			2.383			50.37	28.31	
	03/11/05	Mean	2.763			2.386	-0.378	-13.7%	50.30	28.36	-21.940
S8a	03/11/05	1	1.690			1.418			44.99	24.89	
	03/11/05	2	1.703			1.409			44.95	28.31	
	03/11/05	Mean	1.697			1.414	-0.283	-16.7%	44.97	26.60	-18.370
S8b	03/11/05	1	2.826			2.380			31.30	21.95	
	03/11/05	2	2.834			2.376			31.38	22.05	
	03/11/05	Mean	2.830			2.378	-0.452	-16.0%	31.34	22.00	-9.340
S9a	03/11/05	1	2.408			2.108			40.28	29.00	
	03/11/05	2	2.413			2.106			40.36	28.82	
	03/11/05	Mean	2.411			2.107	-0.304	-12.6%	40.32	28.91	-11.410
S9b	03/11/05	1	1.485			1.078			35.23	20.10	
	03/11/05	2	1.484			1.077			34.96	20.12	
	03/11/05	Mean	1.485			1.078	-0.407	-27.4%	35.10	20.11	-14.985
S10a	03/11/05	1	2.318	3.323	4.487	2.204			39.19	29.47	
	03/11/05	2	2.314	3.317	4.478	2.026			39.00	29.49	
	03/11/05	Mean	2.316	3.320	4.483	2.115	-0.201	-8.7%	39.10	29.48	-9.615
S10b	03/11/05	1	2.720	3.829	5.008	2.305			58.95	29.75	
	03/11/05	2	2.725	3.841	5.012	2.306			59.06	30.35	
	03/11/05	Mean	2.723	3.835	5.010	2.306	-0.417	-15.3%	59.01	30.05	-28.955

Wt in g

Wt in g

Vt Chang

Wt % Char

Area cm2

Area cm3

Area Chang

Area % Change

Area % Change

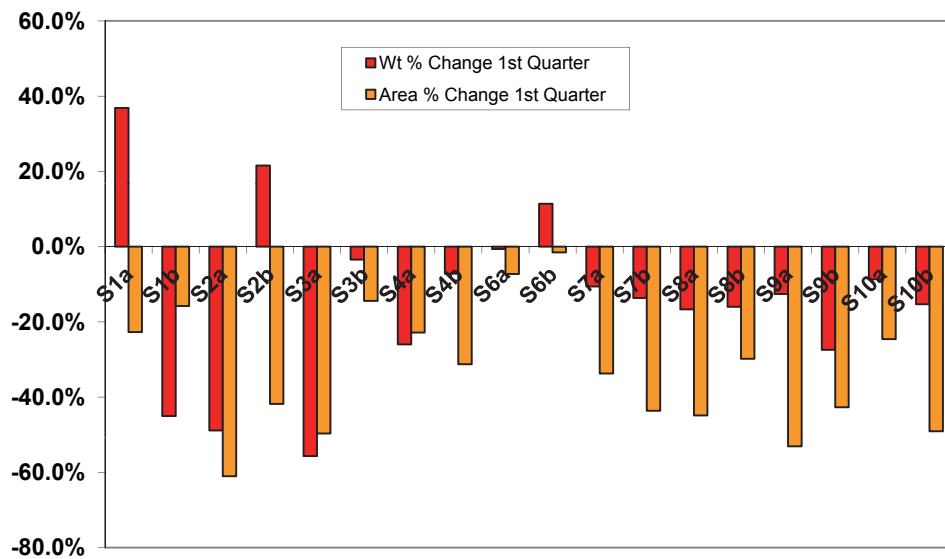
Area % Change

Area % Change

Area % Change

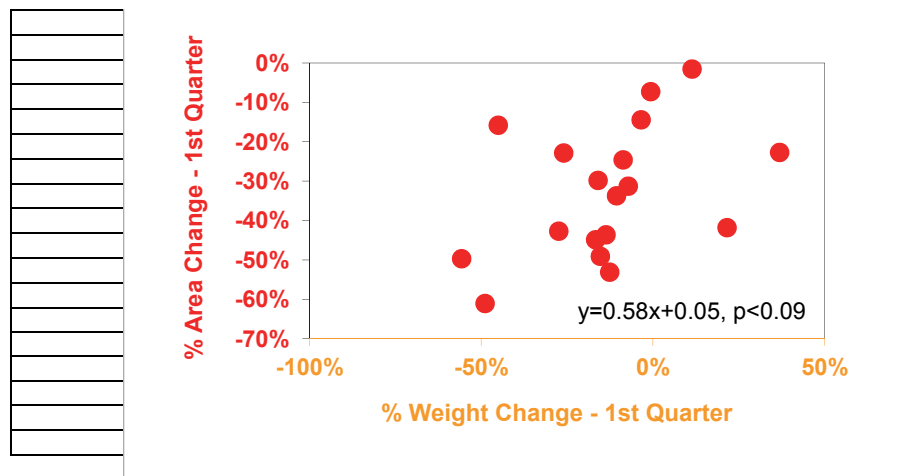
Area % Change

Sponge I. D.	Start	1st Quarter	1st Quarter	1st Quarter	Start	1st Quarter	1st Quarter	1st Quarter	Sponge I. D.	1st Quarter	1st Quarter
S1a	2.730	3.737	1.007	36.9%	54.49	42.120	-12.370	-22.7%	S1a	36.9%	-22.7%
S1b	5.211	2.864	-2.3465	-45.0%	45.80	38.565	-7.235	-15.8%	S1b	-45.0%	-15.8%
S2a	4.892	2.501	-2.391	-48.9%	62.54	24.355	-38.185	-61.1%	S2a	-48.9%	-61.1%
S2b	3.162	3.844	0.682	21.6%	54.03	31.440	-22.585	-41.8%	S2b	21.6%	-41.8%
S3a	4.747	2.103	-2.644	-55.7%	47.88	24.090	-23.790	-49.7%	S3a	-55.7%	-49.7%
S3b	3.575	3.452	-0.123	-3.4%	42.85	36.670	-6.180	-14.4%	S3b	-3.4%	-14.4%
S4a	3.100	2.295	-0.8055	-26.0%	38.13	29.415	-8.710	-22.8%	S4a	-26.0%	-22.8%
S4b	2.804	2.603	-0.2015	-7.2%	37.03	25.450	-11.580	-31.3%	S4b	-7.2%	-31.3%
S6a	3.209	3.188	-0.021	-0.7%	49.28	45.695	-3.585	-7.3%	S6a	-0.7%	-7.3%
S6b	2.348	2.616	0.2675	11.4%	39.68	39.070	-0.610	-1.5%	S6b	11.4%	-1.5%
S7a	3.929	3.512	-0.4165	-10.6%	53.48	35.450	-18.030	-33.7%	S7a	-10.6%	-33.7%
S7b	2.763	2.386	-0.3775	-13.7%	50.30	28.355	-21.940	-43.6%	S7b	-13.7%	-43.6%
S8a	1.697	1.414	-0.283	-16.7%	44.97	24.790	-20.180	-44.9%	S8a	-16.7%	-44.9%
S8b	2.830	2.378	-0.452	-16.0%	31.34	22.00	-9.340	-29.8%	S8b	-16.0%	-29.8%
S9a	2.411	2.107	-0.304	-12.6%	40.32	18.91	-21.410	-53.1%	S9a	-12.6%	-53.1%
S9b	1.485	1.078	-0.407	-27.4%	35.10	20.11	-14.985	-42.7%	S9b	-27.4%	-42.7%
S10a	2.316	2.115	-0.201	-8.7%	39.10	29.48	-9.615	-24.6%	S10a	-8.7%	-24.6%
S10b	2.723	2.306	-0.417	-15.3%	59.01	30.05	-28.955	-49.1%	S10b	-15.3%	-49.1%
										-13.2%	-32.8%



% Change 1st Quarter
-22.7%
-15.8%
-61.1%
-41.8%
-49.7%
-14.4%
-22.8%
-31.3%
-7.3%
15.2%
-33.7%
-43.6%
-40.8%
-29.8%
-28.3%
-42.7%
-24.6%
-49.1%

e	



SUMMARY OUTPUT

Regression Statistics	
Multiple R	0.4203831
R Square	0.176722
Adjusted R Square	0.1252671
Standard Error	0.2166405
Observations	18

ANOVA					
	df	SS	MS	F	Significance F
Regression	1	0.161192	0.161192	3.434504	0.082381
Residual	16	0.7509298	0.0469331		
Total	17	0.9121218			

	Coefficients	Standard Error	t Stat	P-value	Lower 95%	Upper 95%	Lower 95.0%	Upper 95.0%
Intercept	0.0589392	0.1150814	0.5121521	0.6155412	-0.18502	0.302901	-0.18502	0.302901
X Variable 1	0.5832294	0.3147077	1.8532415	0.0823812	-0.08392	1.25038	-0.08392	1.25038