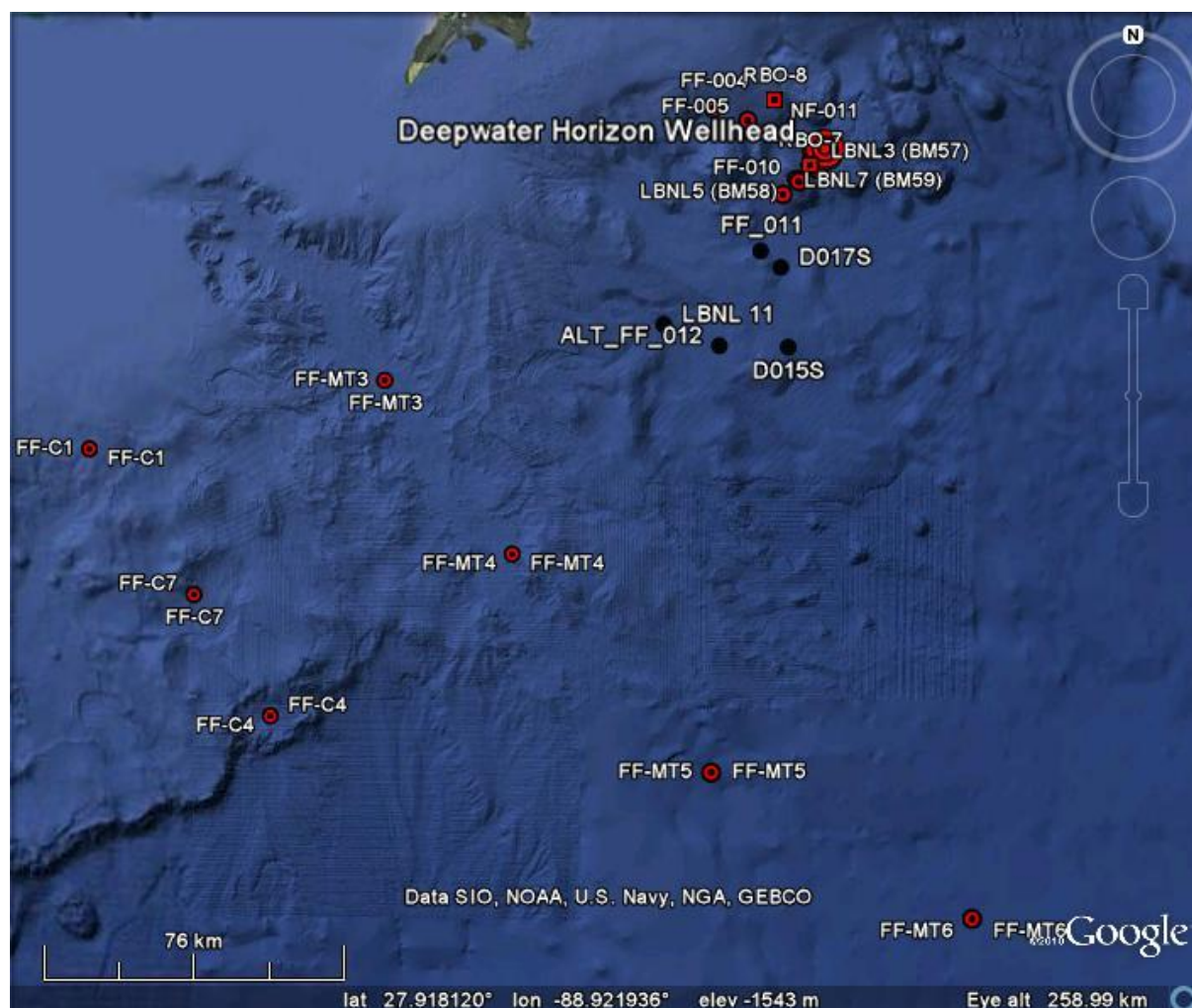


Seabed Sampling Operations	
Vessel	R/V Gyre
Summary Report Number	11
Operating equipment	MEGA Corer (12 core unit)
Date	8 October 2010
Completed casts (24 hr)	4 MEGA Corer
Report compiled by	Nick Morley/Jason Schitoskey

Seabed Sampling Locations



S/V Gyre Sampling Effort				Map Date: 9 OCT 2010 Created by: Nick Morley
Stn ID	Latitude	Longitude	Depth	Sediment Sampling Stations Using Bowers & Connelly MEGA Corer ● Sampled prior to Cruise 5 ● Sampled, Cruise 5, before 8 th Oct 2010 ● Sampled on 8 th October 2010
D015S	28° 17' 37.76'	88 ° 38' 15.72'	1740	
ALT_FF_012	28 ° 17' 50.13'	88 ° 38' 11.36'	1596	
FF_011	28 ° 30' 39.60'	88 ° 31' 48.00'	1656	
LBNL 11 (BP-TN08-SS02)	28 ° 20' 42.72'	88 ° 46' 43.32'	1455	

All cores were processed and stored in accordance with P1470_RN2448_GY_Rev1. Samples were prepared and stored for hydrocarbon, trace metal, BTEX, grain size, total inorganic carbon, total organic carbon, meiofauna, macrofauna and microbiology testing and analysis onshore.

Station DO15S

Lat: 28.293822

Long: -88.460062

Cores recovered: 12 out of 12

Supernatant water

Visible contamination:

None

Olfactible contamination:

None

Sediment

Visible contamination:

No contamination seen in core, however at 34cm (near bottom) was a lens of material with abundant globs and signs of oxidation.

Olfactible contamination:

None

Description: 33 cm firm to soft olive grey clay, with some carbonate tests overlaid with 6 cm less consolidated grey/brown silty clay topped by 2cm brown ooze.



Internal Diameter of Core: 10 cms

ALT_FF_012

Lat: 28.297257

Long: -88.636490

Cores recovered: 12 out of 12

Supernatant water

Visible contamination: None

Olfactible contamination: None

Sediment

Visible contamination:

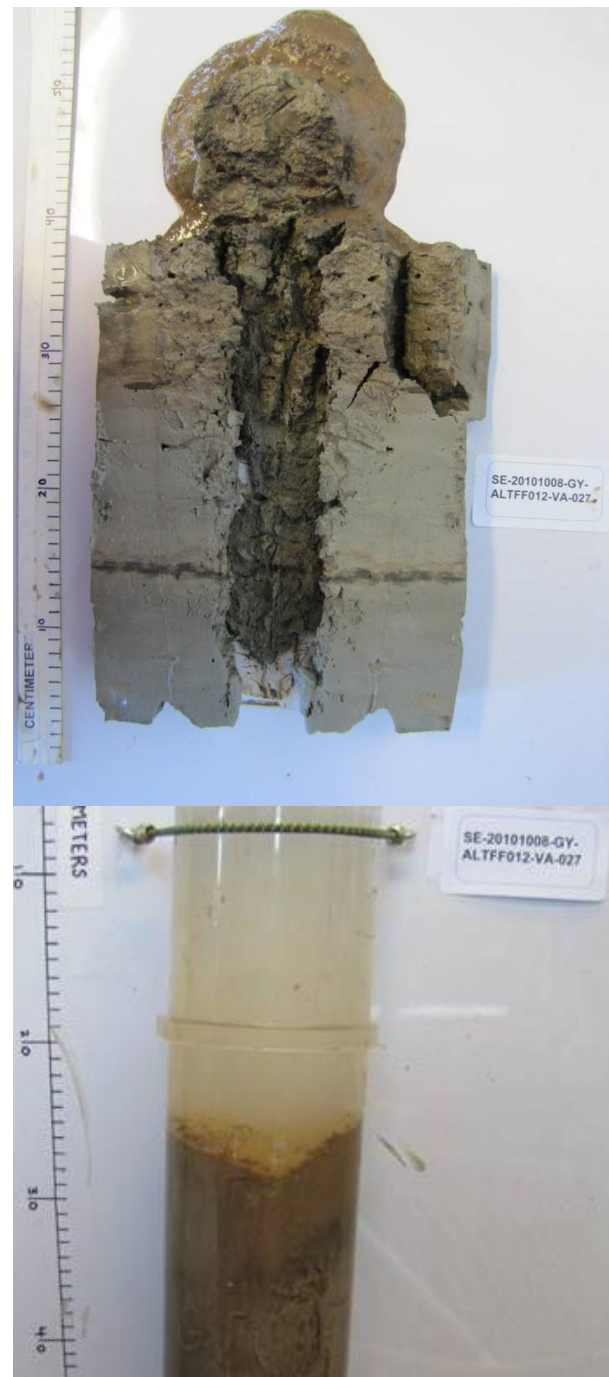
No contamination seen in core.

Olfactible contamination:

None

Description:

30 cm firm to soft gray clay overlaid with 7 cm less consolidated dark gray brown silty clay topped by 2cm brown ooze.



Internal Diameter of Core: 10 cms

LBNL_11

Lat: 28.345200

Long: -88.778699

Cores recovered: 12 out of 12

Supernatant water

Visible contamination:

None

Olfactible contamination:

None

Sediment

Visible contamination:

No contamination seen in core.

Olfactible contamination:

None

Description:

20 cm firm gray clay overlaid with 13 cm less consolidated dark gray brown silty clay topped by 3 cm brown ooze.



Internal Diameter of Core: 10 cms

FF_11

Lat: 28.51100

Long: -88.53000

Cores recovered: 12 out of 12

Supernatant water

Visible contamination:

None

Olfactible contamination:

None

Sediment

Visible contamination:

No contamination seen in core.

Olfactible contamination:

None

Description:

30 cm firm gray clay overlaid with 8 cm less consolidated dark gray brown silty clay topped by 2 cm brown ooze.



Internal Diameter of Core: 10 cms