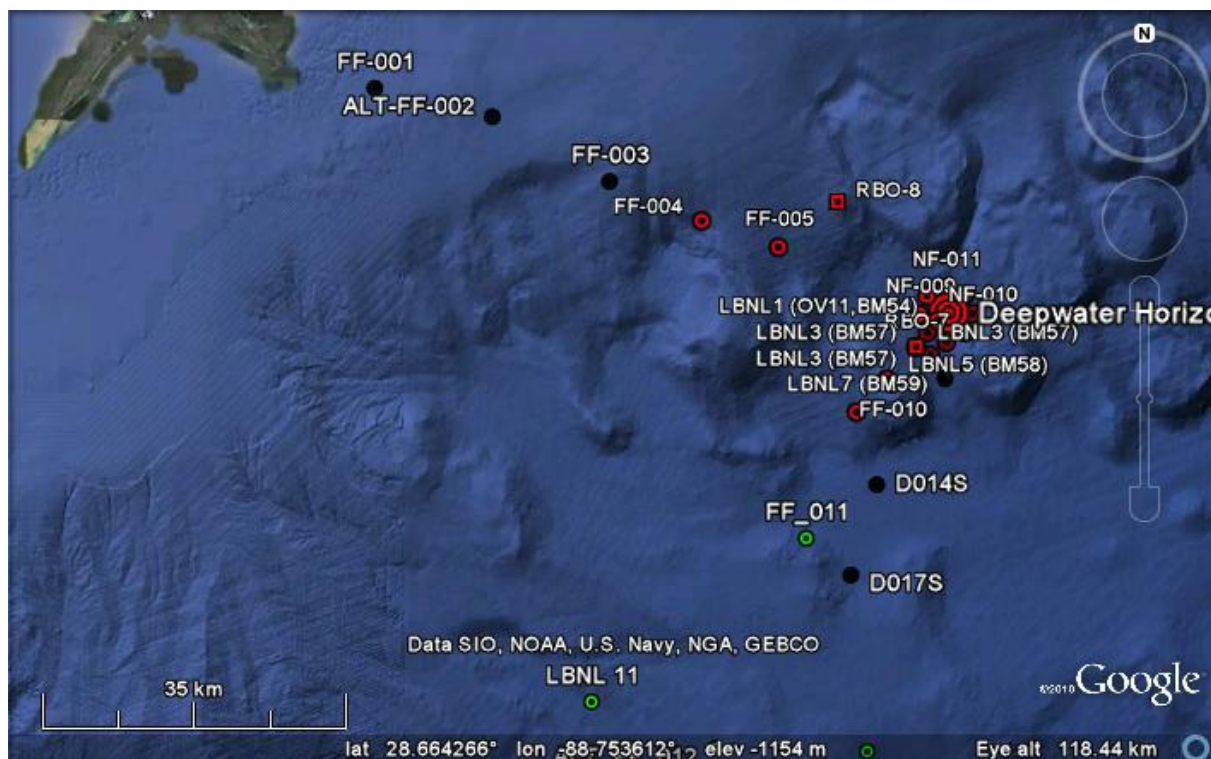


<i>Seabed Sampling Operations</i>	
Vessel	R/V Gyre
Summary Report Number	12
Operating equipment	MEGA Corer (12 core unit)
Date	9 October 2010
Completed casts (24 hr)	5 MEGA Corer
Report compiled by	Nick Morley/Jason Schitoskey

Seabed Sampling Locations



S/V Gyre Sampling Effort				Map Date: 9 OCT 2010 Created by: Nick Morley
Stn ID	Latitude	Longitude	Depth	Sediment Sampling Stations Using Bowers & Connolly MEGA Corer ● Sampled prior to Cruise 5 ● Sampled, Cruise 5, before 9 th Oct 2010 ● Sampled on 9 th October 2010
D014S	28.56523	-88.4482	1769	
D017S	28.47352	-88.4784	1723	
D019S	28.67252	-88.36853	1654	
FF_003	28.874	-88.757	495	
ALT_FF_002	28.9399	-88.8932	231	
FF_001	28.969	-89.0334	79	

All cores were processed and stored in accordance with P1470_RN2448_GY_Rev1. Samples were prepared and stored for hydrocarbon, trace metal, BTEX, grainsize, total inorganic carbon, total organic carbon, meiofauna, macrofauna and microbiology testing and analysis onshore.

Station DO14S

Lat: 28.52630

Long: -88.448180

Cores recovered: 12 out of 12

Supernatant water

Visible contamination:

None

Olfactible contamination:

None

Sediment

Visible contamination:

None.

Olfactible contamination:

None

Description: 25 cm firm grey clay overlaid with 10 cm less consolidated grey/brown silty clay topped by 2cm brown ooze.



Internal Diameter of Core: 10 cms

D017S

Lat: 28.47352

Long: -88.47839

Cores recovered: 12 out of 12

Supernatant water

Visible contamination: None

Olfactible contamination: None

Sediment

Visible contamination:

No contamination seen in core.

Olfactible contamination:

None

Description:

27 cm firm to soft gray clay overlaid with 11 cm less consolidated very dark gray brown silty clay topped by 3 cm brown ooze.



Internal Diameter of Core: 10 cms

D019S

Lat: 28.67252

Long: -88.36853

Cores recovered: 12 out of 12

Supernatant water

Visible contamination:

None

Olfactible contamination:

None

Sediment

Visible contamination:

No contamination seen in core.

Olfactible contamination:

None

Description:

28 cm firm gray clay overlaid with 7 cm less consolidated dark gray brown silty clay topped by 3 cm gray brown ooze.



Internal Diameter of Core: 10 cms

FF_003

Lat: 28.874

Long: -88.757

Cores recovered: 12 out of 12

Supernatant water

Visible contamination:

None

Olfactible contamination:

None

Sediment

Visible contamination:

Black material present on core surface.

Olfactible contamination:

None

Description:

25 cm firm gray clay overlaid with 12 cm soft dark olive gray silty clay topped by 2 cm brown ooze.



Internal Diameter of Core: 10 cms

ALT_FF_002

Lat: 28.874

Long: -88.757

Cores recovered: 12 out of 12

Supernatant water

Visible contamination:

None

Olfactible contamination:

None

Sediment

Visible contamination:

None

Olfactible contamination:

None

Description:

40 cm firm gray clay overlaid with 3 cm soft dark olive gray silty clay topped by 3 cm brown ooze.



Internal Diameter of Core: 10 cms

ALT_FF_001

Lat: 28.969

Long: -889.033363

Cores recovered: 7 out of 12

Supernatant water

Visible contamination:

None

Olfactible contamination:

None

Sediment

Visible contamination:

None

Olfactible contamination:

Sulfide in lower section of core

Description:

32 cm firm to very soft, (thixotropic?), black (anoxic) clay overlaid with 6 cm soft dark gray silty clay topped by 3 cm brown ooze.



Internal Diameter of Core: 10 cms