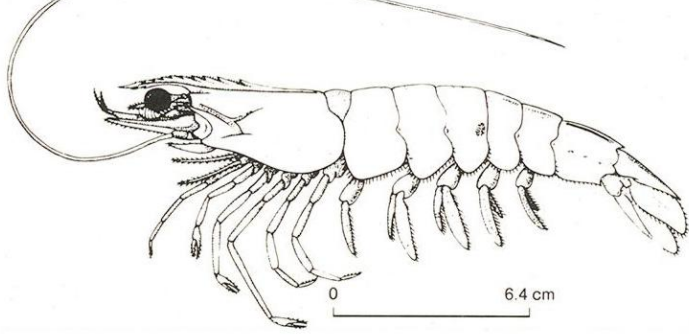


Pink shrimp

Penaeus duorarum
Camaron rosado norteno



Description

Range: The pink shrimp, a decapod crustacean of the family Penaeidae, is found in the western north Atlantic from lower Chesapeake Bay to south Florida and along the Gulf of Mexico coast. The highest concentrations of this species occur off the southwest Florida coast and on the Campeche Banks.

Habitat: This benthic invertebrate is plentiful in waters where the continental shelf is broad and shallow, from the shore to 65 meters, but rarely at greater depths. Adults are found on firm substrates of sand, shell sand, and coral. Juveniles are associated with seagrass beds, and shallow estuarine waters.

Feeding and Behavior: This omnivorous species feeds on detritus and algae, benthic polychaetes, molluscs, crustaceans and other invertebrates, and zooplankton. Pink shrimp burrow into the substrate during the day, feeding mainly at night or during the day if the weather is overcast or the water is turbid. Larvae feed upon planktonic organisms found in the water column. Schooling by size is reported.

Reproduction: Spawning occurs offshore throughout the adult area. In the southern part of the Gulf, spawning occurs year-round, peaking from spring to fall. In the northern part of the Gulf, summer is the most active spawning season. Juveniles remain in shallow waters of seagrass beds and estuaries for 2 to 6 months until mature enough to move to deeper Gulf waters. Nursery areas in the southern Gulf are active year-round while those in the northern Gulf are occupied in the summer and fall.

Movement: In addition to life cycle movements, pink shrimp may move to deeper waters in the fall and winter.

Fisheries: Commercial fishing areas for pink shrimp are located off the west coast of Florida and the Mexican shelf between Laguna de Terminos and Campeche.

References: Christmas, J.Y., and D.J. Etzold, 1977b; Costello, T.J., and D.M. Alien, 1970; Fischer, W., ed., 1978; Gulf of Mexico Fishery Management Council, 1980d.

- Adult Area (Year-round)
- Nursery Area
- Major Nursery Area
- Commercial Fishing Ground (Year-round)
- Major Commercial Fishing Ground (Year-round)

Spawning occurs offshore throughout adult area. It occurs in summer in the northern Gulf and year-round in the southern Gulf. Nursery areas are in northern Gulf in summer and fall and in southern Gulf year-round.

References

Allen, D.M., pers. comm.; Guthertz, E.J., pers. comm.; Hildebrand, H.H., pers. comm.; Osborn, K.W., B.W. Maghan, and S.B. Drummond, 1969; US DOC, NOAA, 1980.

Strategic Assessment Branch
Ocean Assessments Division
Office of Oceanography and Marine Assessment
National Ocean Service/NOAA
and the
Southeast Fisheries Center
National Marine Fisheries Service/NOAA