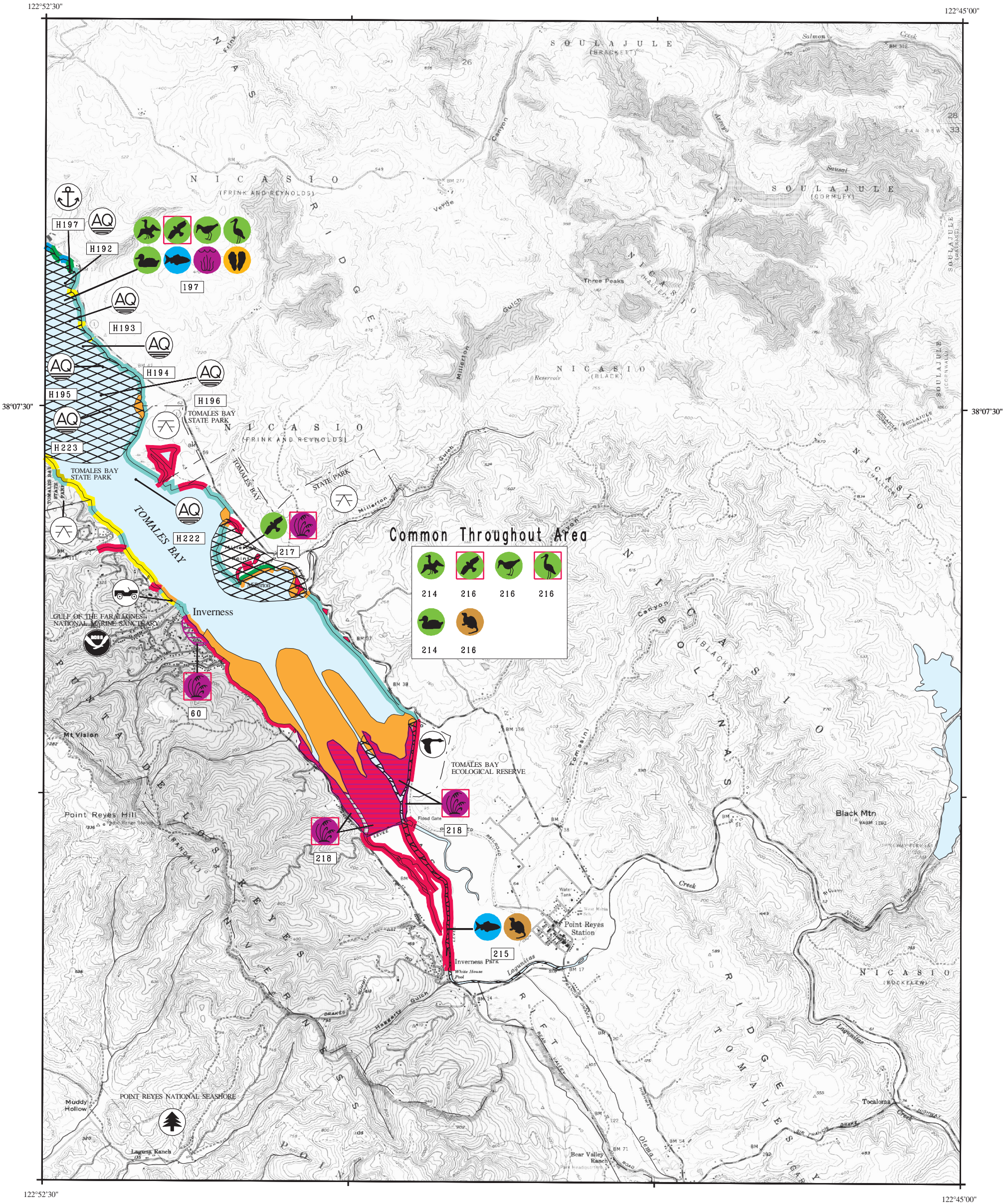


ENVIRONMENTAL SENSITIVITY INDEX MAP



Office of
OIL SPILL PREVENTION and RESPONSE
California Department of Fish and Game

Prepared for



HAZARDOUS MATERIALS RESPONSE
and ASSESSMENT DIVISION
National Oceanic and Atmospheric Administration



1 5 0 1 KILOMETER

1 5 0 1 MILE

PUBLISHED: SEPTEMBER 1994

POINT REYES NE, CALIF. (1976)
INVERNESS, CALIF. (1976)

NC-2