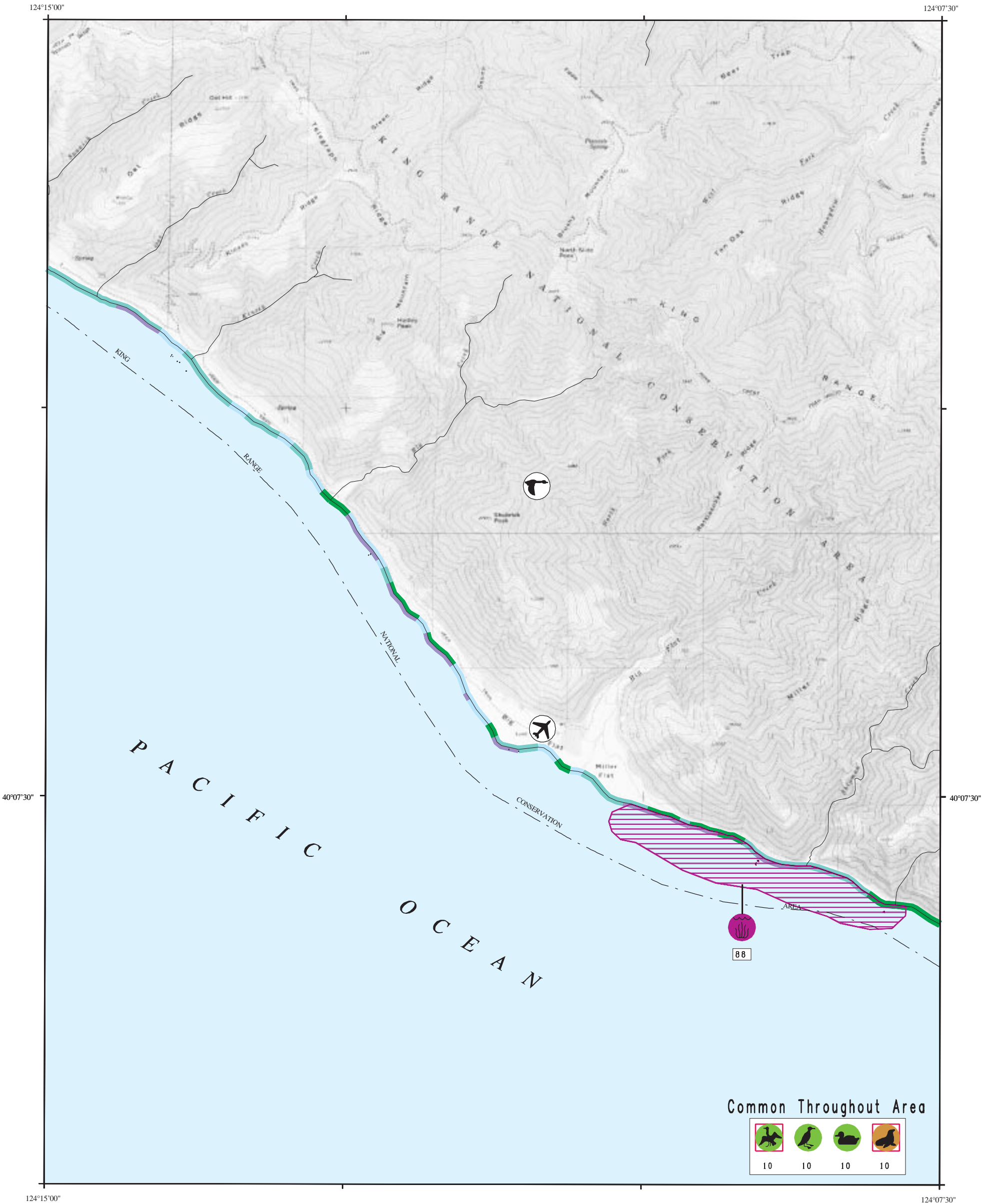




ENVIRONMENTAL SENSITIVITY INDEX MAP








Office of
OIL SPILL PREVENTION and RESPONSE
California Department of Fish and Game

Prepared for



HAZARDOUS MATERIALS RESPONSE
and ASSESSMENT DIVISION
National Oceanic and Atmospheric Administration



PUBLISHED: SEPTEMBER 1994

SHUBRICK PEAK, CALIF. (1969) **NC-22**