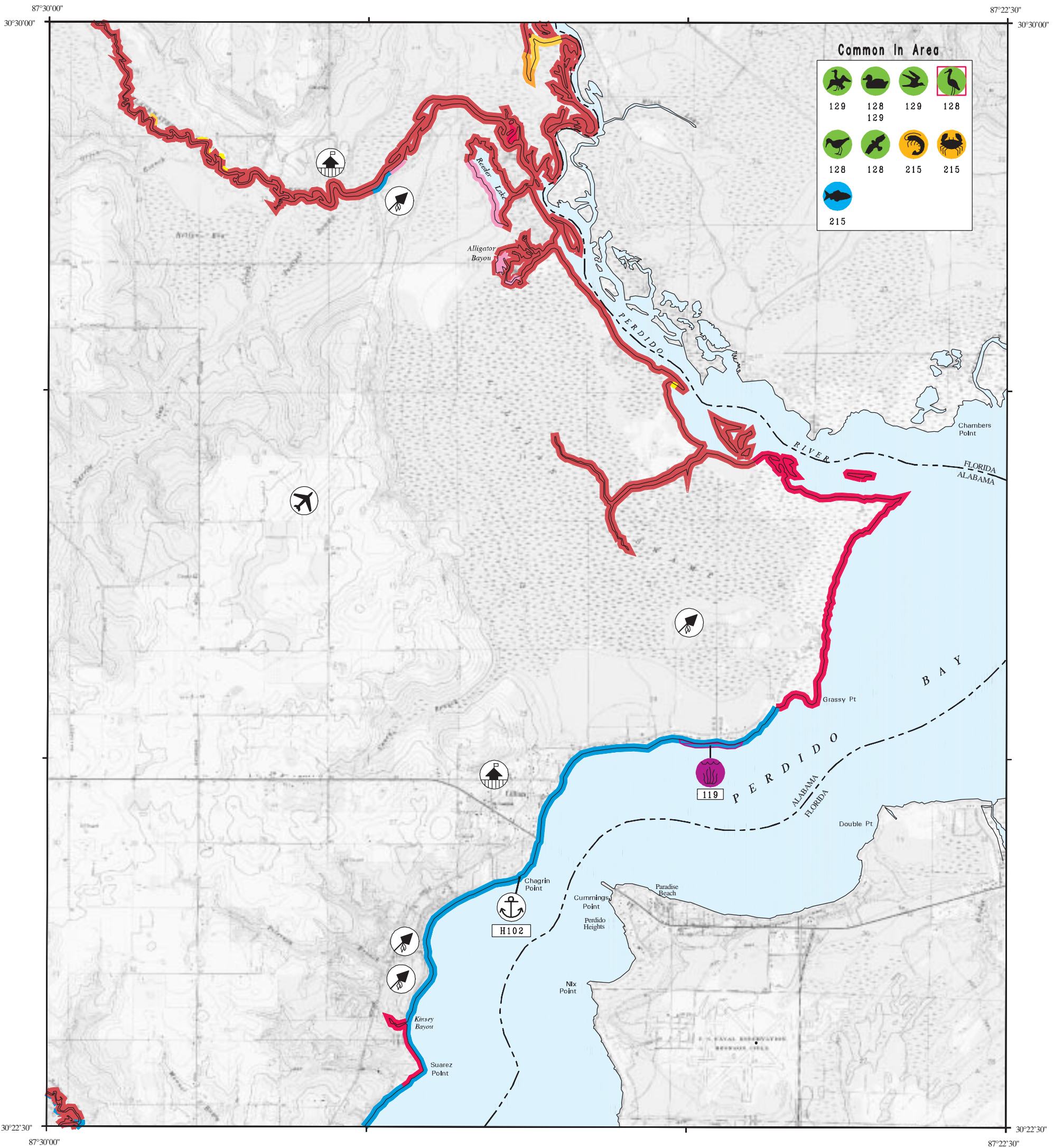


ENVIRONMENTAL SENSITIVITY INDEX MAP



Common In Area			
129	128 129	129	128
128	128	215	215
215			

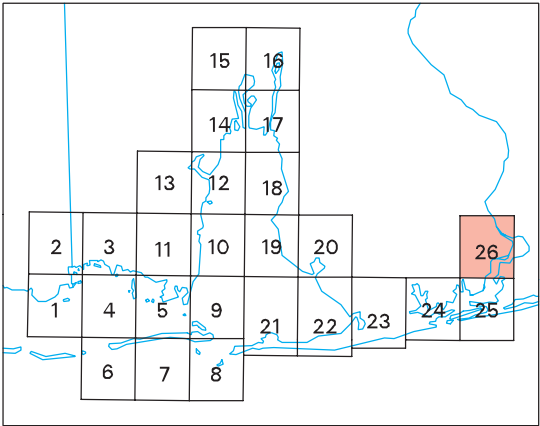
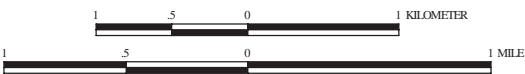


STATE OF ALABAMA



HAZARDOUS MATERIALS RESPONSE
and ASSESSMENT DIVISION
National Oceanic and Atmospheric Administration

Not For Navigation
Published: June 1996



LILLIAN, ALA. -FLA. (1987) **AL-26**