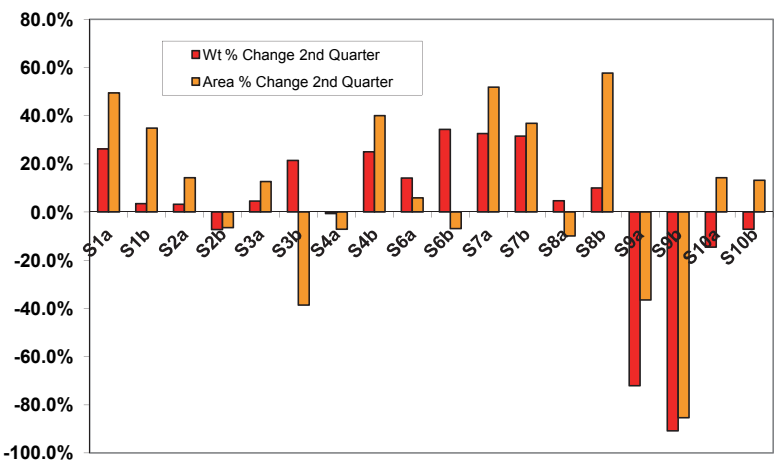


Mycale Growth data (g wet wt.)

Sponge I. D.	Date	Weighing	Wt in g 1st Quarter	Sponge & Paper	Sponge, Paper & Wt	Wt in g 2nd Quarter	Change 2nd Quarter	% Change 2nd Quarter	Area cm2 1st Quarter	Area cm3 2nd Quarter	Change 2nd Quarter	% Change 2nd Quarter
S1a	06/09/05	1	3.735	3.870	5.270	4.715			42.94	63.08		
	06/09/05	2	3.739	3.830	5.260	4.717			41.30	62.87		
	06/09/05	Mean	3.737	3.850	5.265	4.716	0.979	26.2%	42.12	62.98	20.855	49.5%
S1b	06/09/05	1	2.868	6.193	7.472	2.965			38.66	51.70		
	06/09/05	2	2.860	6.205	7.472	2.962			38.47	52.28		
	06/09/05	Mean	2.864	6.199	7.472	2.964	0.099	3.5%	38.57	51.99	13.425	34.8%
S2a	06/09/05	1	2.502	5.886	7.145	2.585			24.46	28.02		
	06/09/05	2	2.500	5.896	7.153	2.580			24.25	27.65		
	06/09/05	Mean	2.501	5.891	7.149	2.583	0.082	3.3%	24.36	27.84	3.480	14.3%
S2b	06/09/05	1	3.845	4.159	5.557	3.566			31.25	29.36		
	06/09/05	2	3.842	4.168	5.554	3.569			31.63	29.44		
	06/09/05	Mean	3.844	4.164	5.556	3.568	-0.276	-7.2%	31.44	29.40	-2.040	-6.5%
S3a	06/09/05	1	2.102	5.758	7.580	2.200			24.05	27.22		
	06/09/05	2	2.104	5.757	7.598	2.197			24.13	27.08		
	06/09/05	Mean	2.103	5.758	7.589	2.199	0.096	4.5%	24.09	27.15	3.060	12.7%
S3b	06/09/05	1	3.446	4.567	6.245	4.196			38.81	41.06		
	06/09/05	2	3.458	4.568	6.248	4.189			34.53	41.00		
	06/09/05	Mean	3.452	4.568	6.247	4.193	0.741	21.5%	36.67	41.03	4.362	11.9%
S4a	06/09/05	1	2.290	4.083	5.068	2.280			29.45	27.12		
	06/09/05	2	2.299	4.085	5.077	2.283			29.38	27.56		
	06/09/05	Mean	2.295	4.084	5.073	2.282	-0.013	-0.6%	29.42	27.34	-2.075	-7.1%
S4b	06/09/05	1	2.601	3.811	4.820	3.253			25.40	35.62		
	06/09/05	2	2.604	3.814	4.825	3.255			25.50	35.65		
	06/09/05	Mean	2.603	3.813	4.823	3.254	0.652	25.0%	25.45	35.64	10.185	40.0%
S5a	06/09/05	1	Missing	3.352	4.354				Missing			
	06/09/05	2	Missing	3.361	4.358				Missing			
	06/09/05	Mean	Missing	3.357	4.356				Missing			
S5b	06/09/05	1	Missing	4.044	5.017				Missing			
	06/09/05	2	Missing	4.059	5.030				Missing			
	06/09/05	Mean	Missing	4.052	5.024				Missing			
S6a	06/09/05	1	3.185	4.203	5.234	3.637			45.56	48.88		
	06/09/05	2	3.191	4.182	5.215	3.639			45.83	47.96		
	06/09/05	Mean	3.188			3.638	0.450	14.1%	45.70	48.42	2.725	6.0%
S6b	06/09/05	1	2.611			3.511			45.560	42.25		
	06/09/05	2	2.620			3.515			45.830	42.83		
	06/09/05	Mean	2.616			3.513	0.898	34.3%	45.70	42.54	-3.155	-6.9%
S7a	06/09/05	1	3.509			4.657			35.39	53.49		
	06/09/05	2	3.515			4.661			35.50	54.17		
	06/09/05	Mean	3.512			4.659	1.147	32.7%	35.45	53.83	18.385	51.9%
S7b	06/09/05	1	2.388			3.141			28.40	38.81		
	06/09/05	2	2.383			3.135			28.31	38.82		
	06/09/05	Mean	2.386			3.138	0.753	31.5%	28.36	38.82	10.460	36.9%
S8a	06/09/05	1	1.418			1.479			24.89	23.68		
	06/09/05	2	1.409			1.480			28.31	24.26		
	06/09/05	Mean	1.414			1.480	0.066	4.7%	26.60	23.97	-2.630	-9.9%
S8b	06/09/05	1	2.380			2.615			21.95	35.14		
	06/09/05	2	2.376			2.618			22.05	34.24		
	06/09/05	Mean	2.378			2.617	0.239	10.0%	22.00	34.69	12.690	57.7%
S9a	06/09/05	1	2.108			0.588			29.00	18.42		
	06/09/05	2	2.106			0.589			28.82	18.33		
	06/09/05	Mean	2.107			0.589	-1.519	-72.1%	28.91	18.38	-10.535	-36.4%
S9b	06/09/05	1	1.078			0.100			20.10	2.92		
	06/09/05	2	1.077			0.099			20.12	2.99		
	06/09/05	Mean	1.078			0.100	-0.978	-90.8%	20.11	2.96	-17.155	-85.3%
S10a	06/09/05	1	2.204	3.323	4.487	1.812			29.47	33.78		
	06/09/05	2	2.026	3.317	4.478	1.804			29.49	33.59		
	06/09/05	Mean	2.115	3.320	4.483	1.808	-0.307	-14.5%	29.48	33.69	4.205	14.3%
S10b	06/09/05	1	2.305	3.829	5.008	2.144			29.75	33.93		
	06/09/05	2	2.306	3.841	5.012	2.141			30.35	34.10		
	06/09/05	Mean	2.306	3.835	5.010	2.143	-0.163	-7.1%	30.05	34.02	3.965	13.2%

Sponge I. D.	Wt in g 1st Quarter	Wt in g 2nd Quarter	Wt Change 2nd Quarter	Wt % Change 2nd Quarter	Area cm3 1st Quarter	Area cm3 2nd Quarter	Area Change 2nd Quarter	Area % Change 2nd Quarter	Sponge I. D.	Wt in g 1st Quarter	Wt in g 2nd Quarter	Wt Change 2nd Quarter	Wt % Change 2nd Quarter	Area cm3 1st Quarter	Area cm3 2nd Quarter	Area Change 2nd Quarter	Area % Change 2nd Quarter
S1a	3.737	4.716	0.979	26.2%	42.120	62.975	20.855	49.5%	S1a	26.2%	49.5%						
S1b	2.864	2.964	0.099	3.5%	38.565	51.990	13.425	34.8%	S1b	3.5%	34.8%						
S2a	2.501	2.583	0.082	3.3%	24.355	27.835	3.480	14.3%	S2a	3.3%	14.3%						
S2b	3.844	3.568	-0.276	-7.2%	31.440	29.400	-2.040	-6.5%	S2b	-7.2%	-6.5%						
S3a	2.103	2.199	0.096	4.5%	24.090	27.150	3.060	12.7%	S3a	4.5%	12.7%						
S3b	3.452	4.193	0.741	21.5%	36.670	22.532	-14.138	-38.6%	S3b	21.5%	-38.6%						
S4a	2.295	2.282	-0.013	-0.6%	29.415	27.340	-2.075	-7.1%	S4a	-0.6%	-7.1%						
S4b	2.603	3.254	0.652	25.0%	25.450	35.635	10.185	40.0%	S4b	25.0%	40.0%						
S6a	3.188	3.638	0.450	14.1%	45.695	48.420	2.725	6.0%	S6a	14.1%	6.0%						
S6b	2.616	3.513	0.898	34.3%	39.070	42.540	3.470	8.9%	S6b	34.3%	-6.9%						
S7a	3.512	4.659	1.147	32.7%	35.450	53.830	18.385	51.9%	S7a	32.7%	51.9%						
S7b	2.386	3.138	0.753	31.5%	28.355	38.815	10.460	36.9%	S7b	31.5%	36.9%						
S8a	1.414	1.480	0.066	4.7%	24.790	23.970	-0.820	-3.3%	S8a	4.7%	-9.9%						
S8b	2.378	2.617	0.239	10.0%	22.000	34.690	12.690	57.7%	S8b	10.0%	57.7%						

S9a	2.107	0.589	-1.519	-72.1%	18.91	18.375	-10.535	-36.4%	S9a	-72.1%	-36.4%	
S9b	1.078	0.100	-0.978	-90.8%	20.11	2.955	-17.155	-85.3%	S9b	-90.8%	-85.3%	
S10a	2.115	1.808	-0.307	-14.5%	29.48	33.69	4.205	14.3%	S10a	-14.5%	14.3%	
S10b	2.306	2.143	-0.163	-7.1%	30.05	34.015	3.965	13.2%	S10b	-7.1%	13.2%	
										1.1%	7.8%	



SUMMARY (

Regression

Multiple R

R Square

Adjusted R Square

Standard Error

Observation:

ANOVA

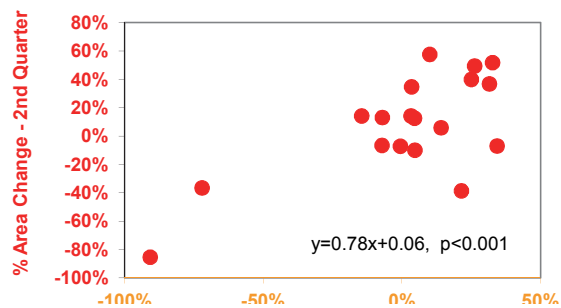
Regression

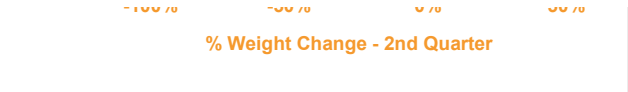
Residual

Total

Intercept

X Variable 1





OUTPUT

Statistics
0.7164928
0.5133619
0.4829471
0.2624867
18

df	SS	MS	F	Significance F
1	1.1629262	1.1629262	16.878645	0.000822
16	1.1023881	0.0688993		
17	2.2653143			

Coefficients	Standard Error	t Stat	P-value	Lower 95%	Upper 95%	Lower 95.0%	Upper 95.0%
0.0698013	0.0619016	1.1276175	0.2761081	-0.06142	0.201027	-0.06142	0.201027
0.7802562	0.189919	4.1083629	0.000822	0.377646	1.182866	0.377646	1.182866