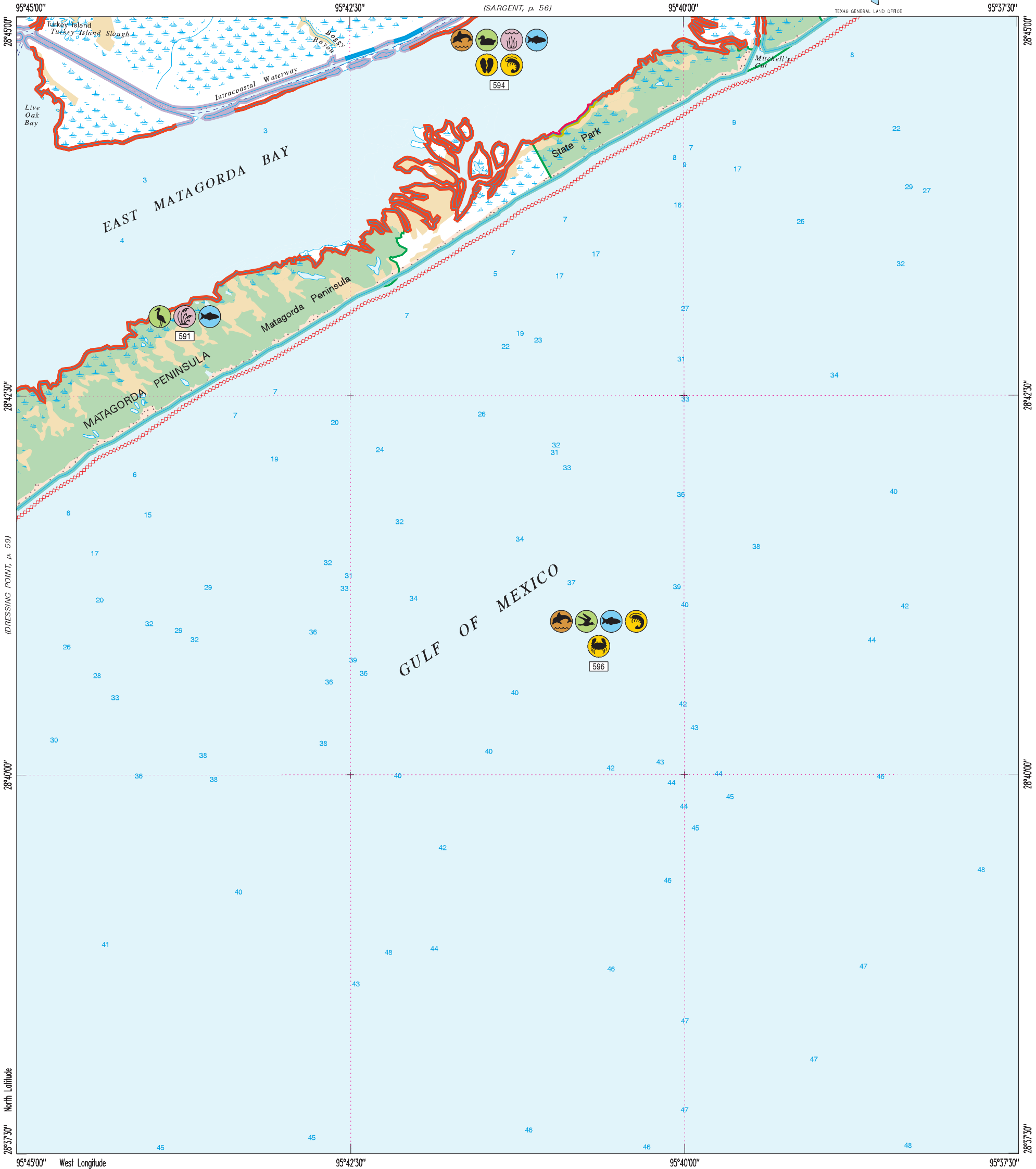


Brown Cedar Cut



Hazardous Materials Response and Assessment Division

Not For Navigation

0 1 Miles

0 1 Nautical Miles

0 5000 Feet

0 1 Kilometers

Depth Soundings in Feet

2895-313

PRIORITY PROTECTION AREAS

- High Priority
- Medium Priority
- Low Priority
- Caution Area

ENVIRONMENTAL SENSITIVITY INDEX

10C - Freshwater swamps	6B - Exposed riprap structures	Marsh, Wetland
10B - Freshwater marshes	6A - Gravel beaches	Tidal/Mud Flats
10A - Salt and brackish water marshes	5 - Mixed sand and gravel beaches	Beach, Bar
9 - Sheltered tidal flats	4 - Coarse-grained sand beaches	State Park/Wildlife Management Area
8C - Sheltered scarps	3B - Scarps and steep slopes in sand	
8B - Sheltered riprap structures	3A - Fine-grained sand beaches	
8A - Sheltered solid man-made structures	2B - Wave-cut clay platforms	
7 - Exposed tidal flats	2A - Scarps and steep slopes in clay	
	1 - Exposed walls and other solid structures	

Washover Area