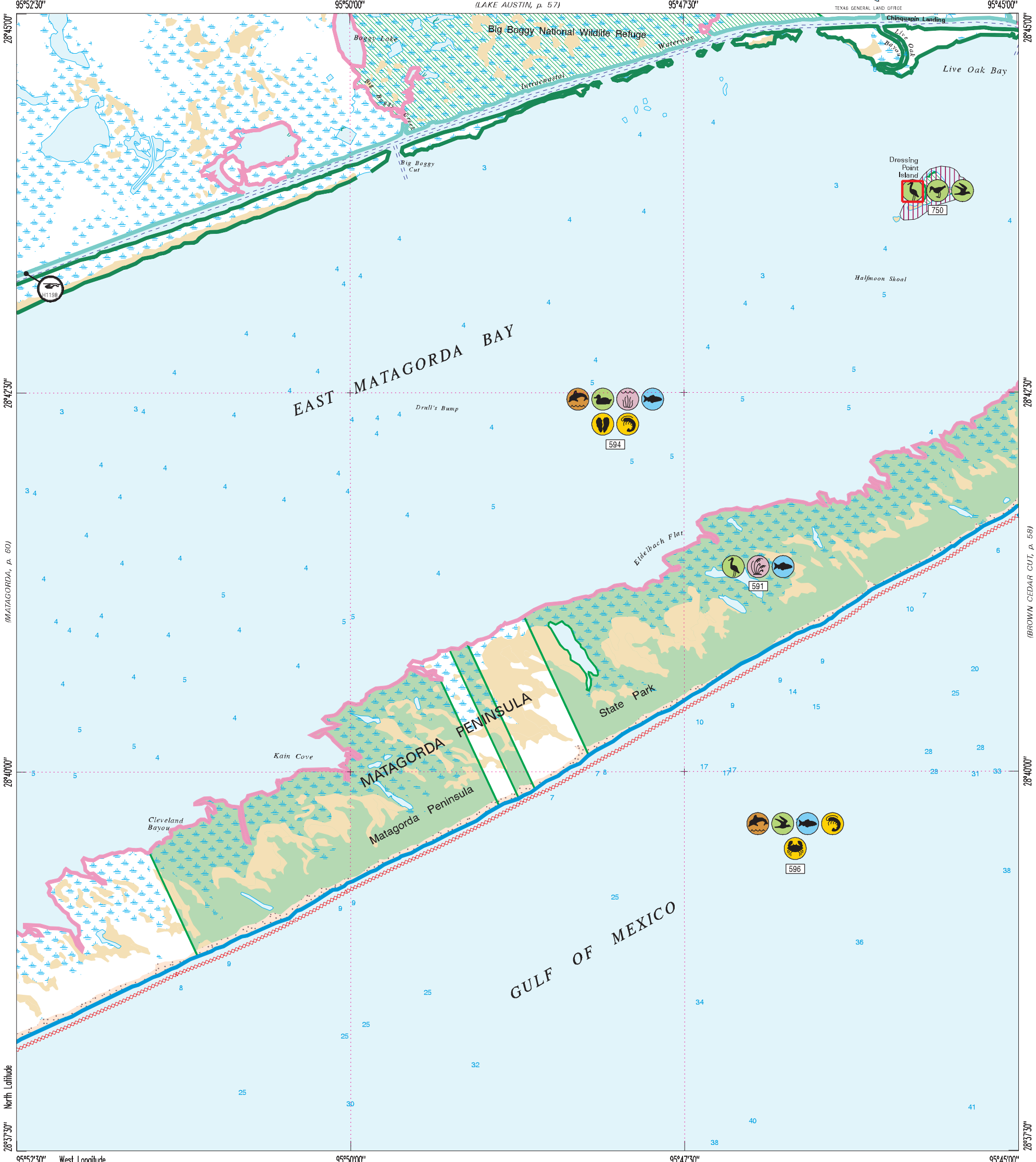


Dressing Point



TEXAS
GENERAL LAND OFFICE
OIL SPILL
PREVENTION & RESPONSE

NOAA
NATIONAL OCEANIC AND ATMOSPHERIC ADMINISTRATION
U.S. DEPARTMENT OF COMMERCE

Hazardous Materials Response
and Assessment Division

Not For Navigation

0 1 Miles

0 1 Nautical Miles

0 5000 Feet

0 2 Kilometers

Depth Soundings in Feet

HUMAN-USE FEATURES

- Heliport

PRIORITY PROTECTION AREAS

- High Priority
- Medium Priority
- Low Priority
- Caution Area

ENVIRONMENTAL SENSITIVITY INDEX - TNRC

HIGH IMPACT

- Shallow Seagrass Flats
- Mangroves
- Marshes & Wetlands (Tidally Influenced)
- Sheltered Tidal Flats with Vegetated Margins

MODERATE IMPACT

- Riparian Zone along Freshwater Rivers
- Oyster Reefs

LOW IMPACT

- Exposed Tidal Flats
- Spoil Deposits
- Partially Exposed Bay Margins
- Sand-Shell Substrate
- Fine-Grained Sand
- Seawalls, Jetties, Bulkheads, etc.
- Erosional Scarps

Washover Area

- Marsh, Wetland
- Tidal/Mud Flats
- Beach, Bar
- Submerged Aquatic Vegetation
- National Wildlife Refuge
- State Park/Wildlife Management Area
- Bird Rookery Area

2895-324