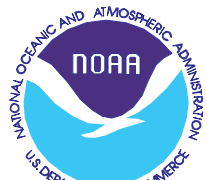
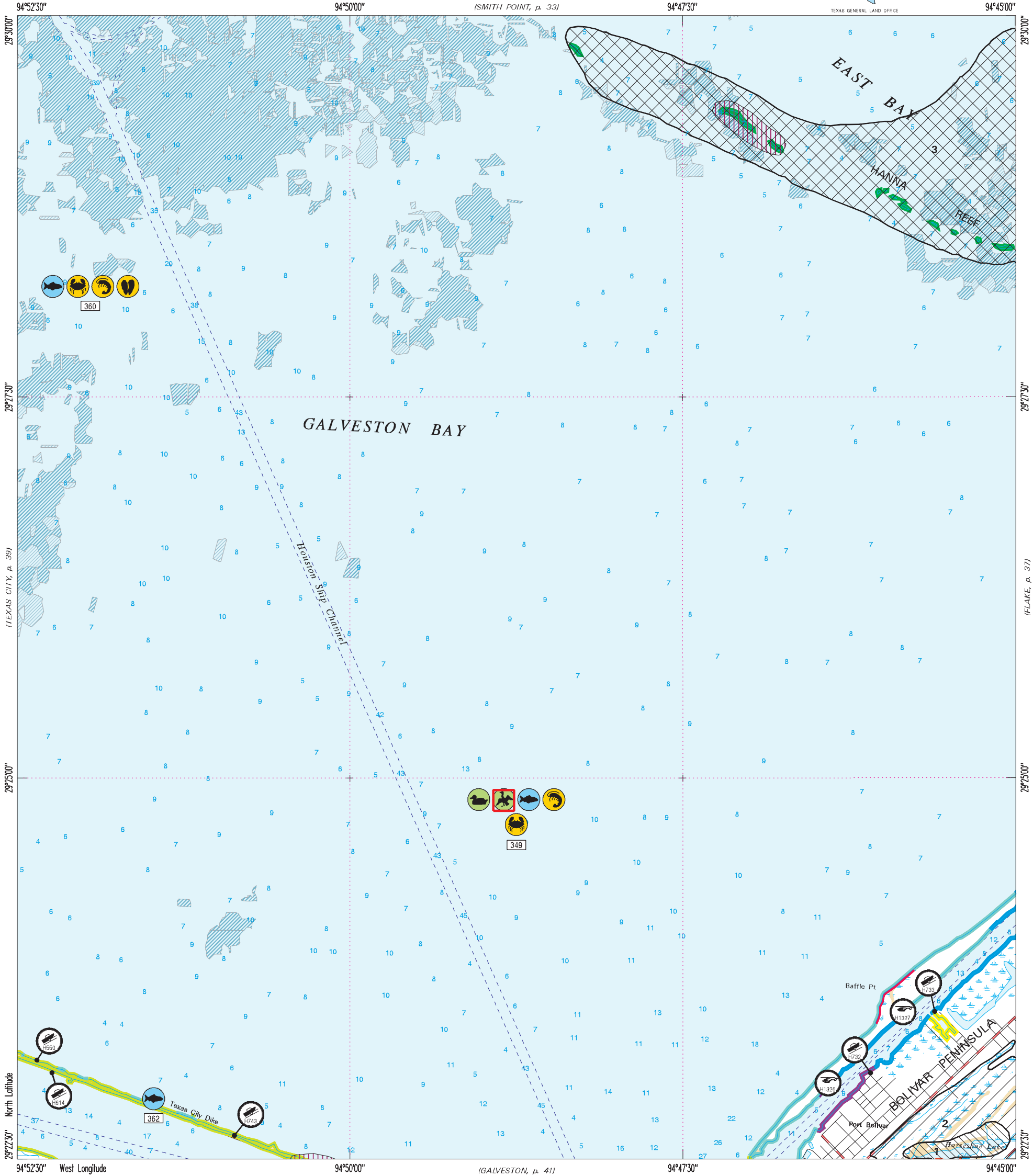


Port Bolivar

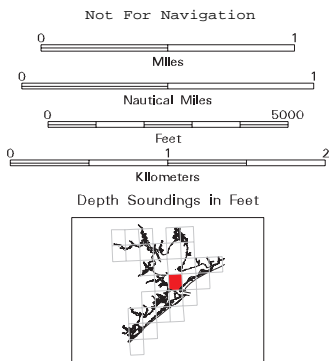
(SMITH POINT, p. 33)



TEXAS GENERAL LAND OFFICE



Hazardous Materials Response and Assessment Division



2994-234

HUMAN-USE FEATURES

- Boat Launch Site
- Heliport

PRIORITY PROTECTION AREAS

- High Priority
- Medium Priority
- Low Priority
- Caution Area

ENVIRONMENTAL SENSITIVITY INDEX

- 10C - Freshwater swamps
- 10B - Freshwater marshes
- 10A - Salt and brackish water marshes
- 9 - Sheltered tidal flats
- 8C - Sheltered scarps
- 8B - Sheltered riprap structures
- 8A - Sheltered solid man-made structures
- 7 - Exposed tidal flats
- 6B - Exposed riprap structures
- 6A - Gravel beaches
- 5 - Mixed sand and gravel beaches
- 4 - Coarse-grained sand beaches
- 3B - Scarps and steep slopes in sand
- 3A - Fine-grained sand beaches
- 2B - Wave-cut clay platforms
- 2A - Scarps and steep slopes in clay
- 1 - Exposed walls and other solid structures
- Municipal Area
- Marsh, Wetland
- Tidal/Mud Flats
- Inundated Area
- Bird Rookery Area
- Oyster Reef
- Oyster Shell on Mud