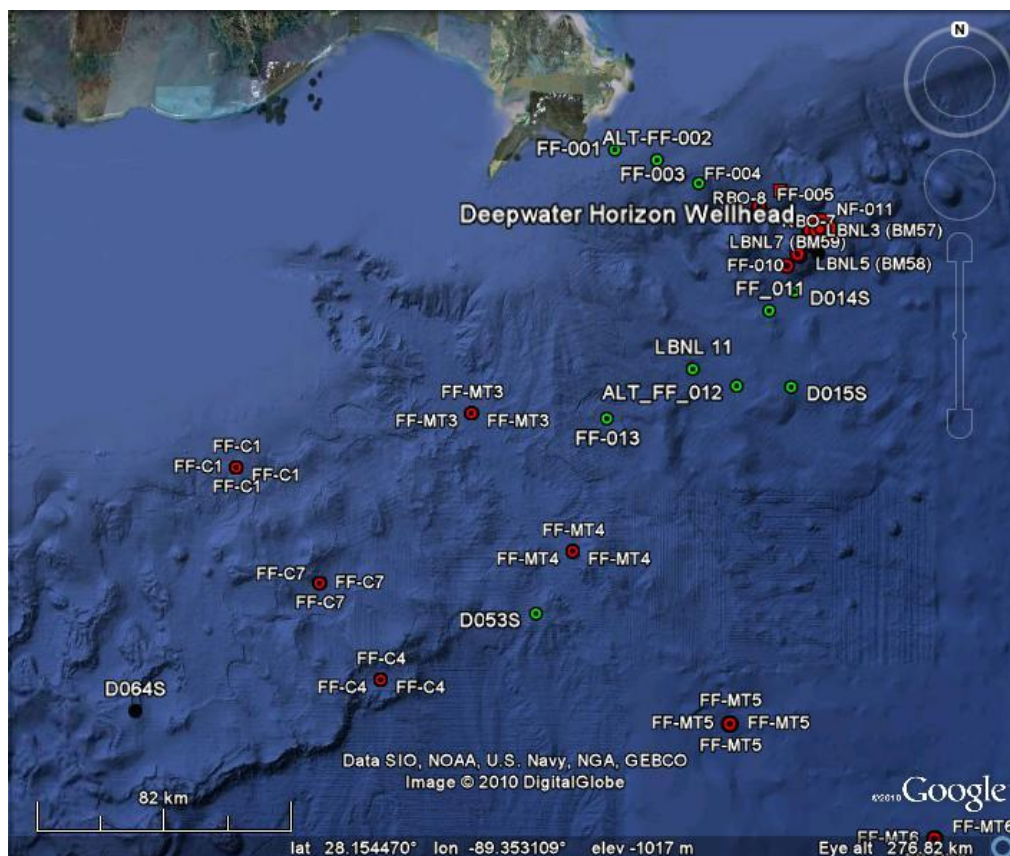


<i>Seabed Sampling Operations</i>	
Vessel	R/V Gyre
Summary Report Number	13
Operating equipment	MEGA Corer (12 core unit)
Date	10 October 2010
Completed casts (24 hr)	3 MEGA Corer
Report compiled by	Nick Morley/Jason Schitoskey

### Seabed Sampling Locations



S/V Gyre Sampling Effort				Map Date: 9 OCT 2010 Created by: Nick Morley
Stn ID	Latitude	Longitude	Depth	<b>Sediment Sampling Stations</b> Using Bowers & Connolly MEGA Corer ● Sampled prior to Cruise 5 ● Sampled Cruise 5, before 11 <sup>th</sup> Oct 2010 ● Sampled on 11 <sup>th</sup> October 2010
D064S	72.361300	90.568800	1226	

All cores were processed and stored in accordance with P1470\_RN2448\_GY\_Rev1. Samples were prepared and stored for hydrocarbon, trace metal, BTEX, grainsize, total inorganic carbon, total organic carbon, meiofauna, macrofauna and microbiology testing and analysis onshore.

## Station DO64S

Lat: 27.361300

Long: -90.568800

Cores recovered: 12 out of 12

### Supernatant water

*Visible contamination:*

None

*Olfactible contamination:*

None

### Sediment

*Visible contamination:*

None.

*Olfactible contamination:*

None

*Description:* 31 cm firm grey clay overlaid with 6 cm soft brown clay with dark banding topped by 3 cm brown ooze. Clays were of medium to high plasticity,



Internal Diameter of Core: 10 cms