

Greetings All :- Guidance for Wednesday, September 1st

Jon Fajans is running the mission guidance calls and providing guidance from ICP Houma with input from the OSAT and JAG.

The updated depiction of the DO sag / depression (interpreted as an impact of the subsurface dispersed oil) is shown below as figure 1. 19 stations have been added since yesterday. Figure 2 is a depiction of general location of the ships that are underway tomorrow. Figure 3 is an Aquatracka sample map through Aug 30. The final three figures are provided by Dick Crout to shed some light on possible gyres within the sample area.

Notes from the 3pm CDT call:

American Diver working with the HOS Davis and conducting acoustics and water sampling above 100M.

Brooks McCall (via email) Finished transect 10 stations 16,17,18.

HOS Davis completed ROV water sampling and holocam at T5S3. DO depression reported between 960-1200M Sampled above and below anomaly. Heading to port tonight and will be back out for possible rendezvous with Pisces tomorrow afternoon.

Ocean Veritas (via email) completed four stations (T15-18 along S7) with weak DO sag at T17 1119-1173M

Pisces sampled the pie wedge area between the two grids DO anomaly detected south of the 1000M contour weakening 80-90 km south. Heading up the T5 line at 10km intervals. Possible media visit in the morning. Possible rendezvous with HOS Davis in afternoon.

SPECIFIC VESSEL GUIDANCE

Brooks McCall

Transect 22 S17-S7 – coordinates sent via email.

Ocean Veritas

Transect 13 S7-S17 – coordinates sent via email.

Be safe and have a good evening,

jon

Map Date: 31-August-2010

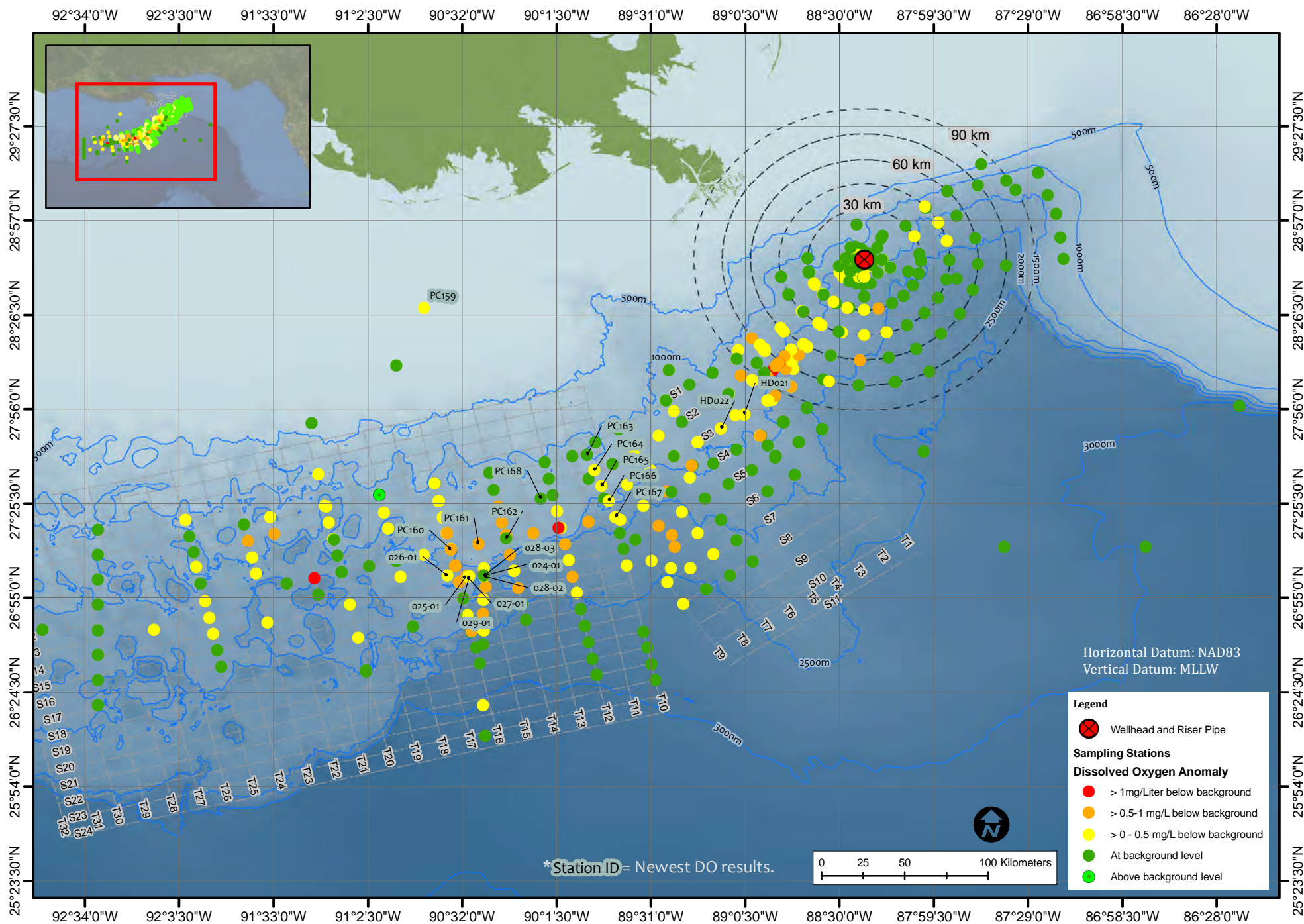
Dissolved Oxygen Results 1000 - 1500 Meter Depths

Mission Guidance



Data Cumulative from 03 Aug to 30 Aug, 2010

Deepwater Horizon Response, Gulf of Mexico



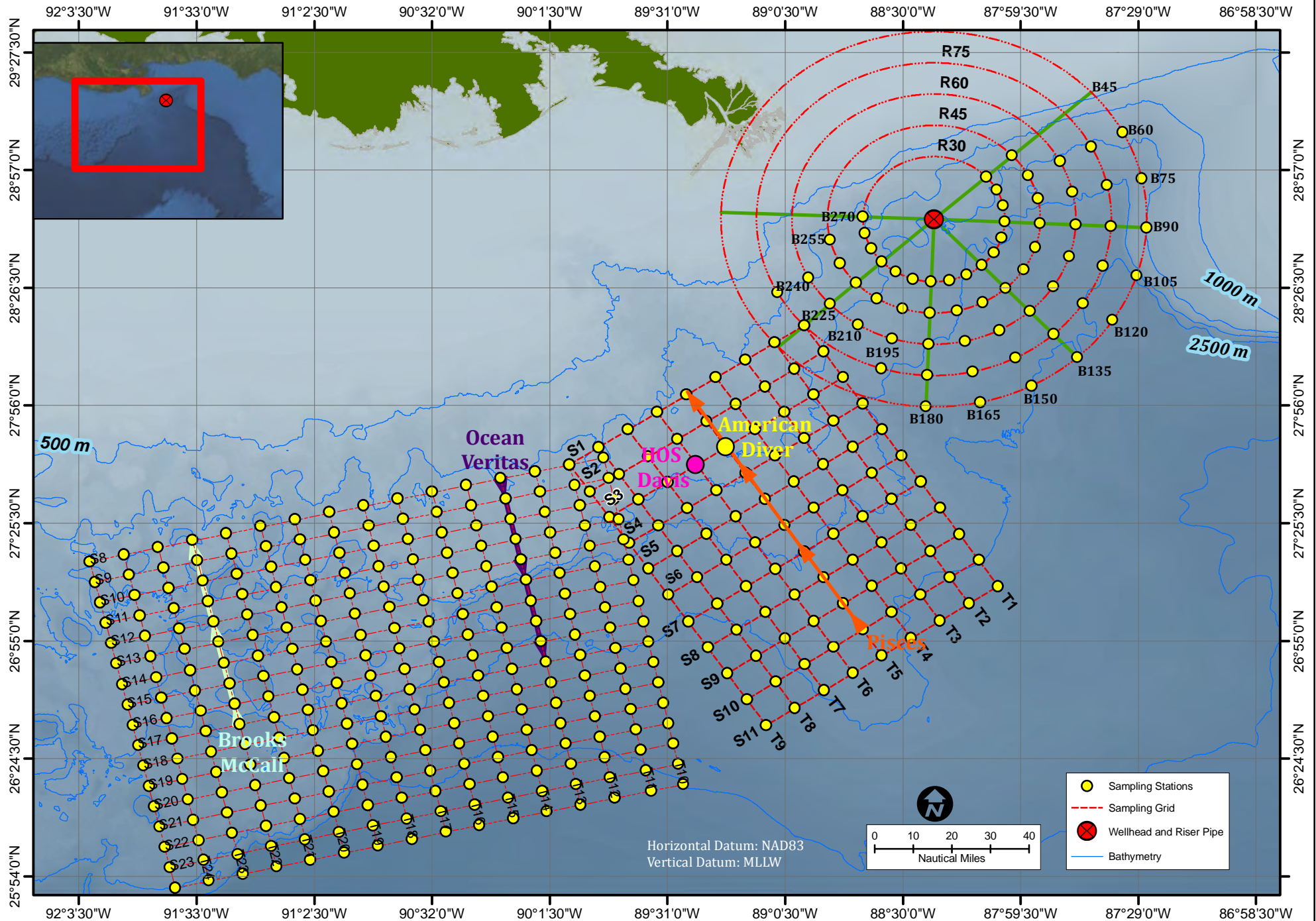
Date: 1-September-2010

Subsurface Monitoring: Mission Guidance



Mission Guidance

Deepwater Horizon Response, Gulf of Mexico



Map Date: 30-August-2010

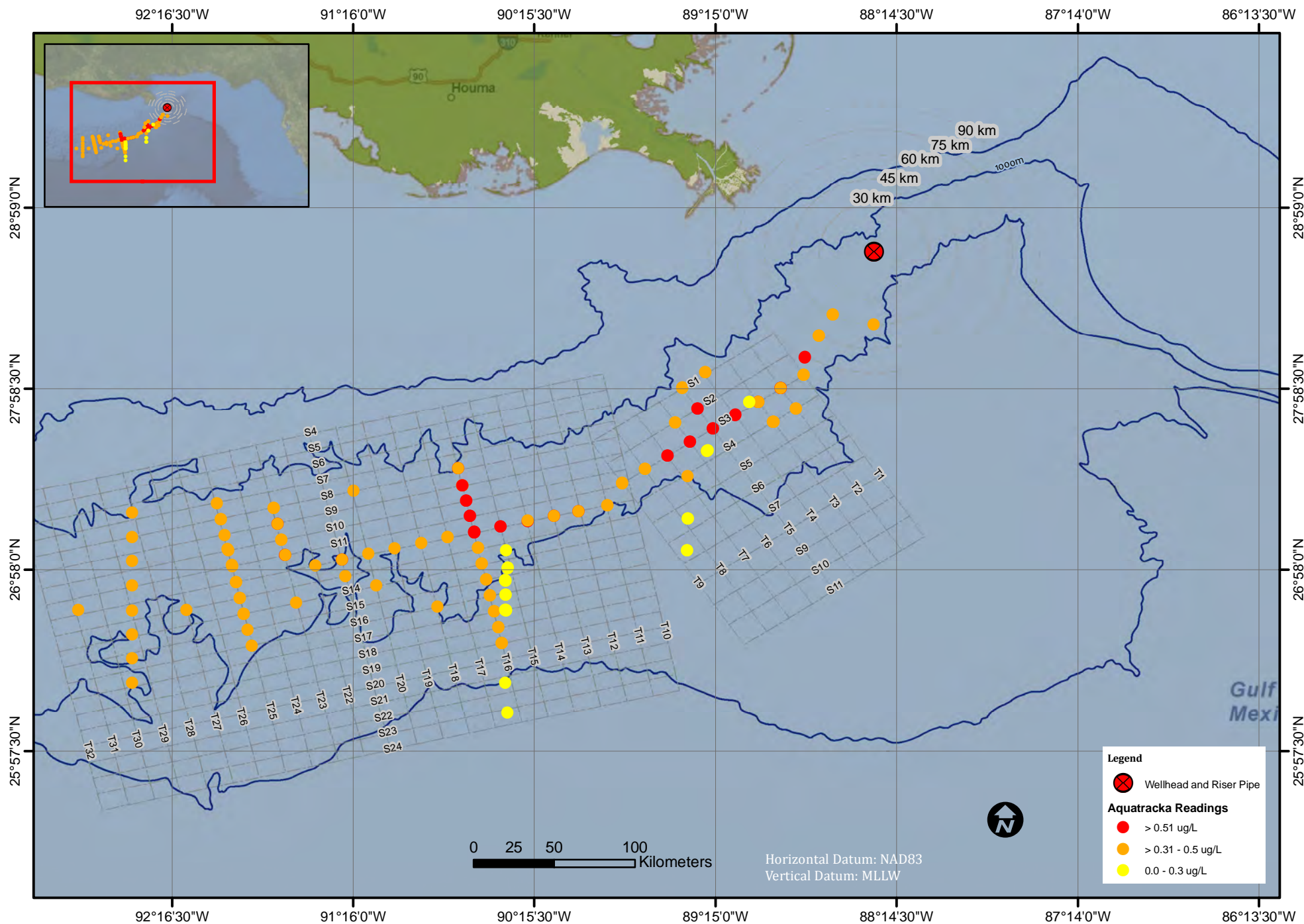
Aquatracka Fluorometry 1000 - 1500 Meter Depths

Mission Guidance

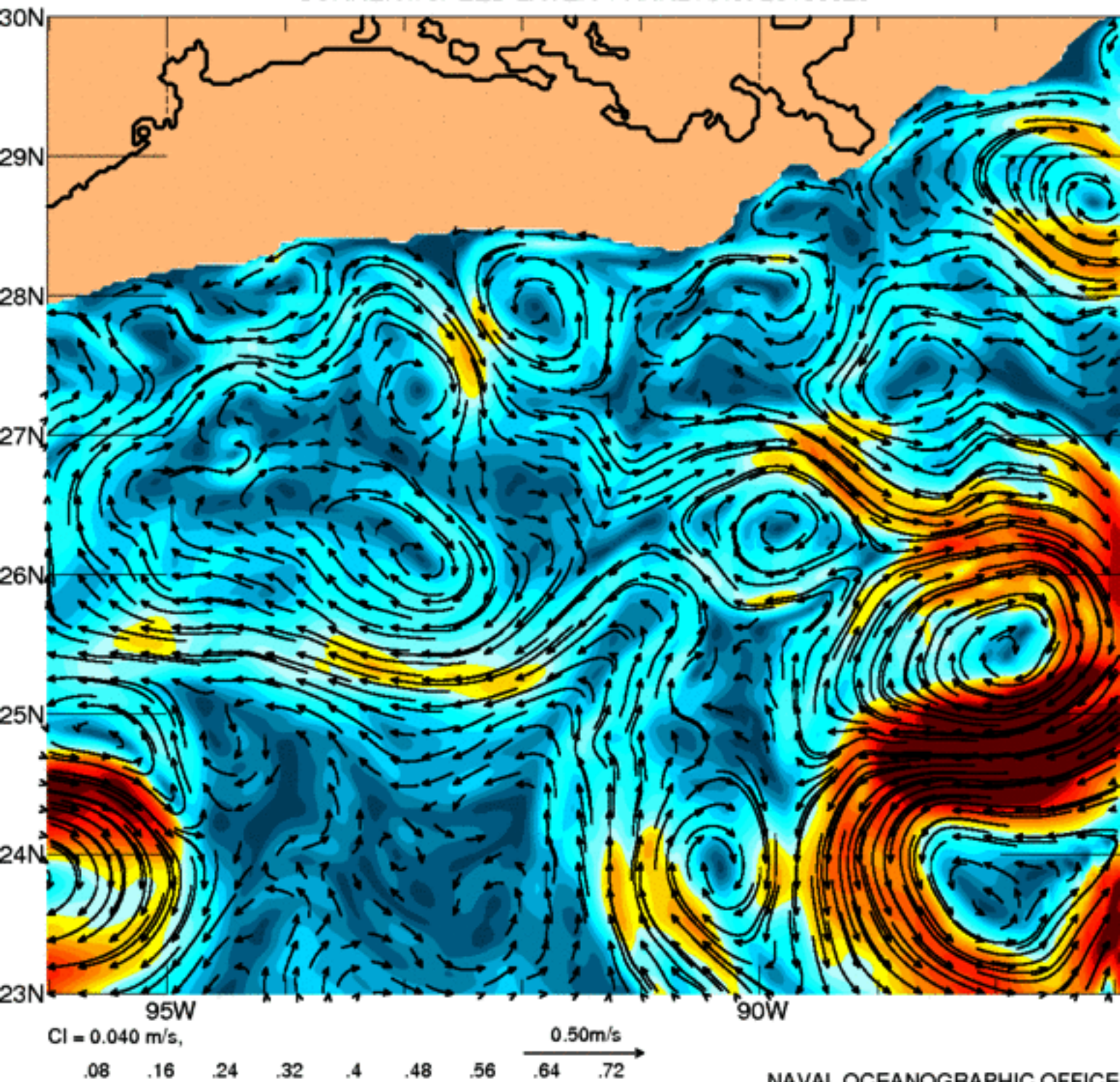


Data Cumulative through 29 Aug, 2010

Deepwater Horizon Response, Gulf of Mexico



UNCLASSIFIED: 1/32° Global NLOM
CURRENT/SPEED LAYER 1 ANALYSIS: 20100825

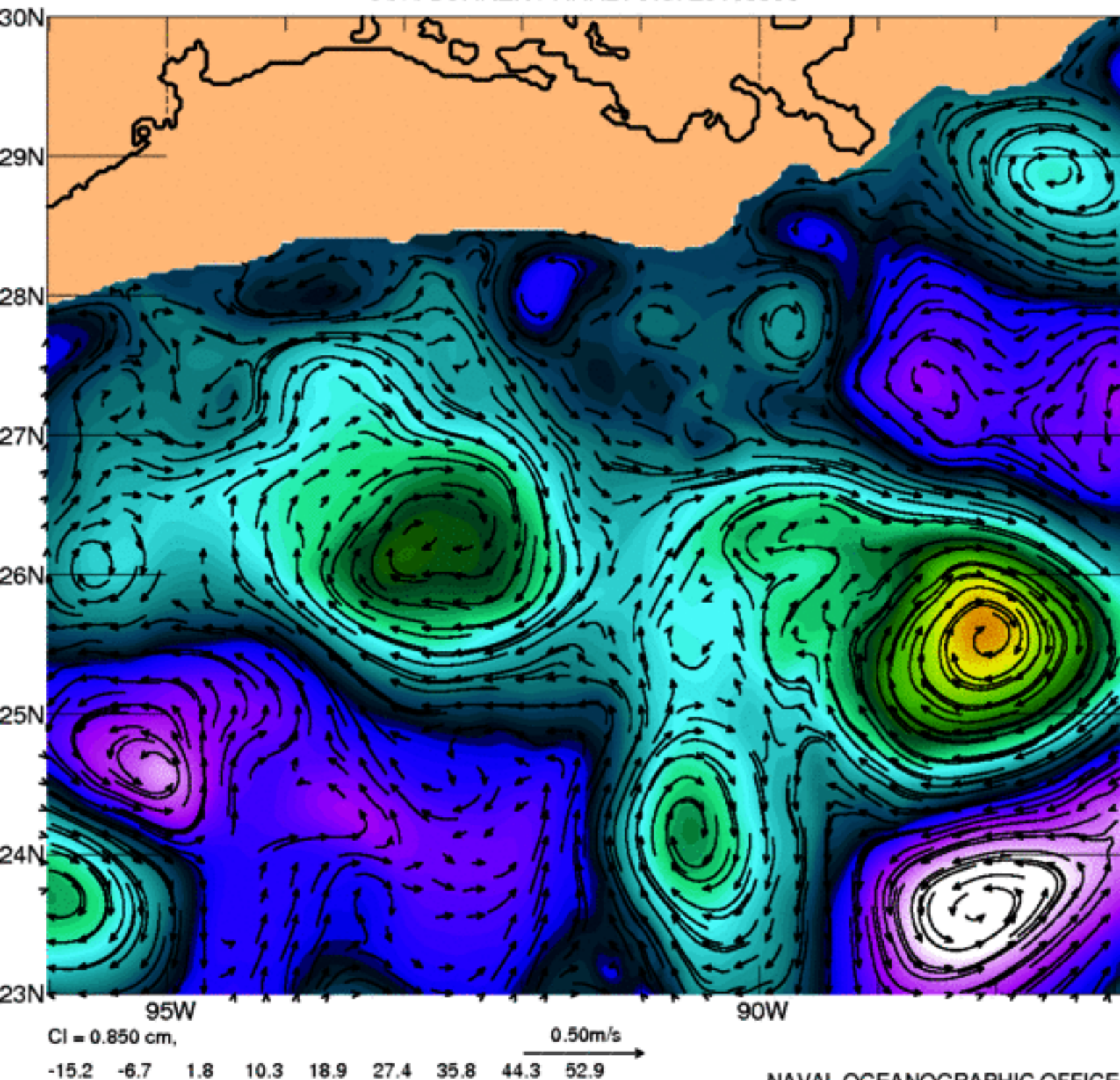


NAVAL OCEANOGRAPHIC OFFICE

Approved for public release. Distribution unlimited.

UNCLASSIFIED: 1/32° Global NLOM

SSH/CURRENT ANALYSIS: 20100830



NAVAL OCEANOGRAPHIC OFFICE

Approved for public release. Distribution unlimited.

Real-Time Mesoscale Altimetry - Aug 30, 2010

