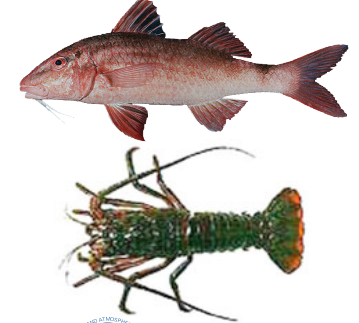
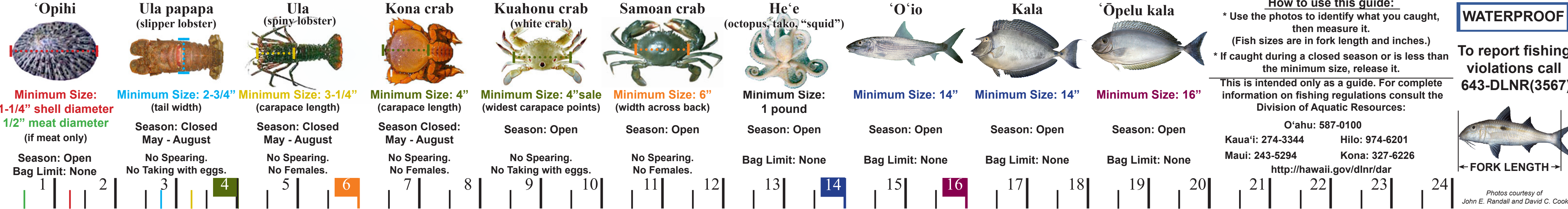


Purpose for this guide:
 This is a tool to measure regulated species that you catch. By following fishing regulations, you allow the species to reproduce. This will help to ensure fish for the future.

A Measurement Guide for Regulated Nearshore Species of Hawai'i

November 2012

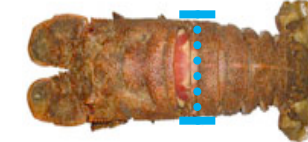




‘Opihi


Minimum Size:
1-1/4" shell diameter
1/2" meat diameter
 (if meat only)

Season: Open
 Bag Limit: None

Ula papapa
 (slipper lobster)


Minimum Size: 2-3/4"
 (tail width)

Season: Closed
 May - August

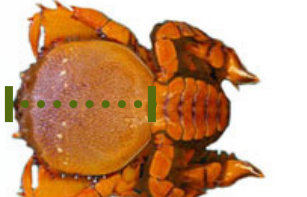
No Spearing.
 No Taking with eggs.

Ula
 (spiny lobster)


Minimum Size: 3-1/4"
 (carapace length)

Season: Closed
 May - August


No Spearing.
 No Females.

Kona crab


Minimum Size: 4"
 (carapace length)

Season Closed:
 May - August

No Spearing.
 No Females.

Kuahonu crab
 (white crab)


Minimum Size: 4" sale
 (widest carapace points)

Season: Open

No Spearing.
 No Taking with eggs.

Samoan crab


Minimum Size: 6"
 (width across back)

Season: Open

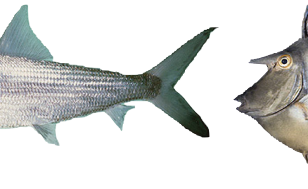
No Spearing.
 No Females.

He‘e
 (octopus, tako, "squid")


Minimum Size:
 1 pound

Season: Open

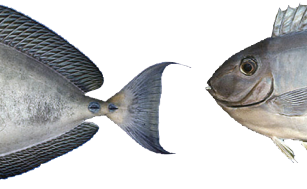
Bag Limit: None

‘O‘io


Minimum Size: 14"

Season: Open

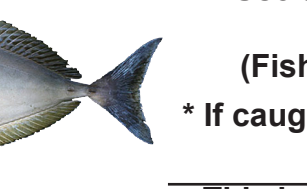
Bag Limit: None

Kala


Minimum Size: 14"

Season: Open

Bag Limit: None

‘Ōpelu kala


Minimum Size: 16"

Season: Open

Bag Limit: None

How to use this guide:
 * Use the photos to identify what you caught, then measure it.
 (Fish sizes are in fork length and inches.)
 * If caught during a closed season or is less than the minimum size, release it.

This is intended only as a guide. For complete information on fishing regulations consult the Division of Aquatic Resources:

O‘ahu: 587-0100
 Kaua‘i: 274-3344 Hilo: 974-6201
 Maui: 243-5294 Kona: 327-6226
<http://hawaii.gov/dlnr/dar>

WATERPROOF

To report fishing violations call **643-DLNR(3567)**



Photos courtesy of John E. Randall and David C. Cook