

Āholehole



Minimum Size: 5"

Season: Open

Bag Limit: None



Manini



Minimum Size: 5"

Season: Open

Bag Limit: None



Moano



Minimum Size: 7"

Season: Open

Bag Limit: None



Weke / 'Oama



Minimum Size: 7" sale

Season: Open

Bag Limit: 50 'Oama ('Oama are weke less than 7")



Akule & Halalū



Minimum Size: 8-1/2" with net during July - October

Bag Limit: 200 lbs of akule less than 8-1/2" during July - October



Awa



Minimum Size: 9"

Season: Open

Bag Limit: None



Ulua & Pāpio



Minimum Size: 10" 16" sale

Season: Open

Bag Limit: 20 (total all species)



Kūmū



Minimum Size: 10"

Season: Open

Bag Limit: None



Moi



Minimum Size: 11"

Season: Closed June - August

Bag Limit: 15



'Ama'ama



Minimum Size: 11"

Season: Closed December - March

Bag Limit: None



Uhu



Minimum Size: 12"

Season: Open

Bag Limit: None

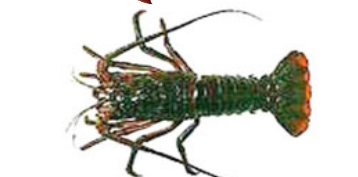


Purpose for this guide:

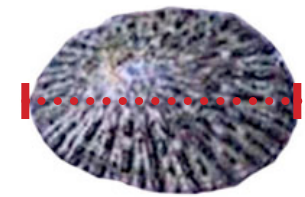
This is a tool to measure regulated species that you catch. By following fishing regulations, you allow the species to reproduce. This will help to ensure fish for the future.

A Measurement Guide for Regulated Nearshore Species of Hawai'i

November 2013



‘Opihi



Minimum Size:
1-1/4" shell diameter
1/2" meat diameter
(if meat only)

Season: Open
Bag Limit: None



Ula papapa
(slipper lobster)



Minimum Size: 2-3/4"
(tail width)

Season: Closed
May - August

No Spearing.
No Taking with eggs.



Ula
(spiny lobster)



Minimum Size: 3-1/4"
(carapace length)

Season: Closed
May - August

No Spearing.
No Females.



Kona crab



Minimum Size: 4"
(carapace length)

Season Closed:
May - August

No Spearing.
No Females.



Kuahonu crab
(white crab)



Minimum Size: 4" sale
(widest carapace points)

Season: Open

No Spearing.
No Taking with eggs.



Samoaan crab



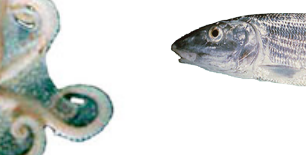
Minimum Size: 6"
(width across back)

Season: Open

No Spearing.
No Females.



He‘e
(octopus, tako, "squid")



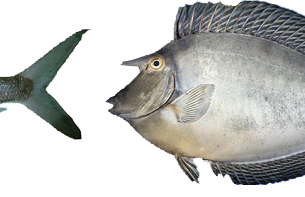
Minimum Size:
1 pound

Season: Open

Bag Limit: None



‘O‘io



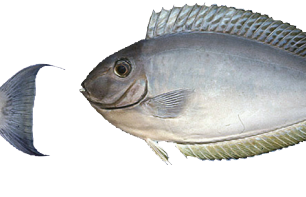
Minimum Size: 14"

Season: Open

Bag Limit: None



Kala



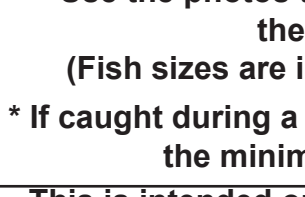
Minimum Size: 14"

Season: Open

Bag Limit: None



‘Ōpelu kala



Minimum Size: 16"

Season: Open

Bag Limit: None



How to use this guide:

- * Use the photos to identify what you caught, then measure it.
(Fish sizes are in fork length and inches.)
- * If caught during a closed season or is less than the minimum size, release it.

This is intended only as a guide. For complete information on fishing regulations consult the Division of Aquatic Resources:

O‘ahu: 587-0100
 Kaua‘i: 274-3344 Hilo: 974-6201
 Maui: 243-5294 Kona: 327-6226
<http://hawaii.gov/dlnr/dar>

WATERPROOF

To report fishing violations call **643-DLNR(3567)**



Photos courtesy of John E. Randall and David C. Cook