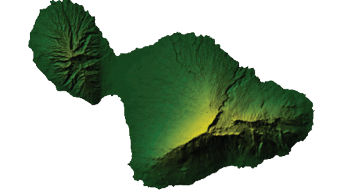
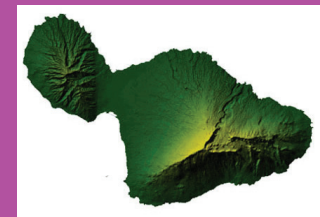


A Measurement Guide for Regulated Nearshore Species of Maui

July 2016



These regulations only apply to Maui.



'Oama



'Oama are weke less than 5"

No Minimum Size
No Commercial Sale
Hook & Line Only
Season: Open

Bag Limit: 50 'Oama

Weke



Minimum Size: 8" (excludes 'Oama)

Season: Open

Bag Limit: None

Munu



Minimum Size: 8"

Season: Open

Bag Limit: 2

Kūmū



Minimum Size: 12"

Season: Open

Bag Limit: 1

Moano Kea



Minimum Size: 12"

Season: Open

Bag Limit: 2

Weke Nono



Minimum Size: 12"

Season: Open

Bag Limit: None

All other Goatfish



Minimum Size: 8"

Season: Open

Bag Limit: None

Uhu Palukaluka



Minimum Size: 14"

Season: Open

Bag Limit: 2 (total all species)

Uhu 'ele 'ele



NO TAKE

Season: Closed

Bag Limit: No Take

Uhu 'ahu 'ula



Minimum Size: 14"

Season: Open

Bag Limit: 2 (total all species)

Uhu 'uli 'uli

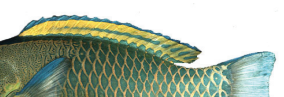


NO TAKE

Season: Closed

Bag Limit: No Take

All other Uhu



Minimum Size: 10"

Season: Open

Bag Limit: 2 (total all species)

These regulations only apply to Maui.



How to use this guide:

- * Use the photos to identify what you caught, then measure it. (Fish sizes are in fork length and inches.)
- * If it is less than minimum size, or out of season, release it.

Purpose of this guide:

This is a tool to measure regulated species that you catch. By following fishing regulations, you allow the species to reproduce. This will help to ensure fish for the future.

This is intended only as a guide. For complete information on fishing regulations, contact the Division of Aquatic Resources:

- Maui: 243-5294
 - Kaua'i: 274-3344
 - O'ahu: 587-0100
 - Hilo: 974-6201
 - Kona: 327-6226
- dlnr.hawaii.gov/dar

WATERPROOF

To report fishing violations call **643-DLNR(3567)**



← FORK LENGTH →

Photos courtesy of John E. Randall and David C. Cook

