



FISHING REGULATIONS IN AMERICAN SAMOA

ALL COMMERCIAL HARVESTING REQUIRES PERMITS & LICENCES

AMERICAN SAMOA FISHING REGULATIONS LIMIT TAKING, POSSESSING, OR SELLING THE FOLLOWING:

CORAL (AMU)

It is illegal to disturb living coral in water less than 60 feet deep.

GIANT CLAMS (FAISUA)

Tridacnid clams must be 6 inches or larger to harvest and 7 inches or larger to sell. Clams are measured across the widest part of the shell. All clams offered for sale must be in whole condition (meat attached to shell).

SEA TURTLES & MARINE MAMMALS

It is illegal to harvest sea turtles or their eggs, marine mammals (whales, dolphins, and porpoises), or any product of these species.

HUMPHEAD WRASSE (LALAFI/TAGAFA/MALAKEA), BUMPHEAD PARROTFISH (ULUMAKO), SHARKS (MALIE), & GIANT GROUPE (GATALA)

These species are illegal to harvest, possess, or sell.

MANGROVE CRAB (PA'ALEMAGO)

Must measure at least 6 inches across the widest part of the back. It is illegal to harvest egg-bearing females.

COCONUT CRAB (UU)

Must measure at least 3 inches across the widest portion of the back. It is also illegal to harvest any egg-bearing female or interfere with a crab releasing larvae.

SPINY LOBSTER (ULA)

Must measure at least 3 1/8 inches in carapace length, measured between the horns from front to rear edge of carapace. It is illegal to harvest egg-bearing females and all lobsters must remain whole until processed.

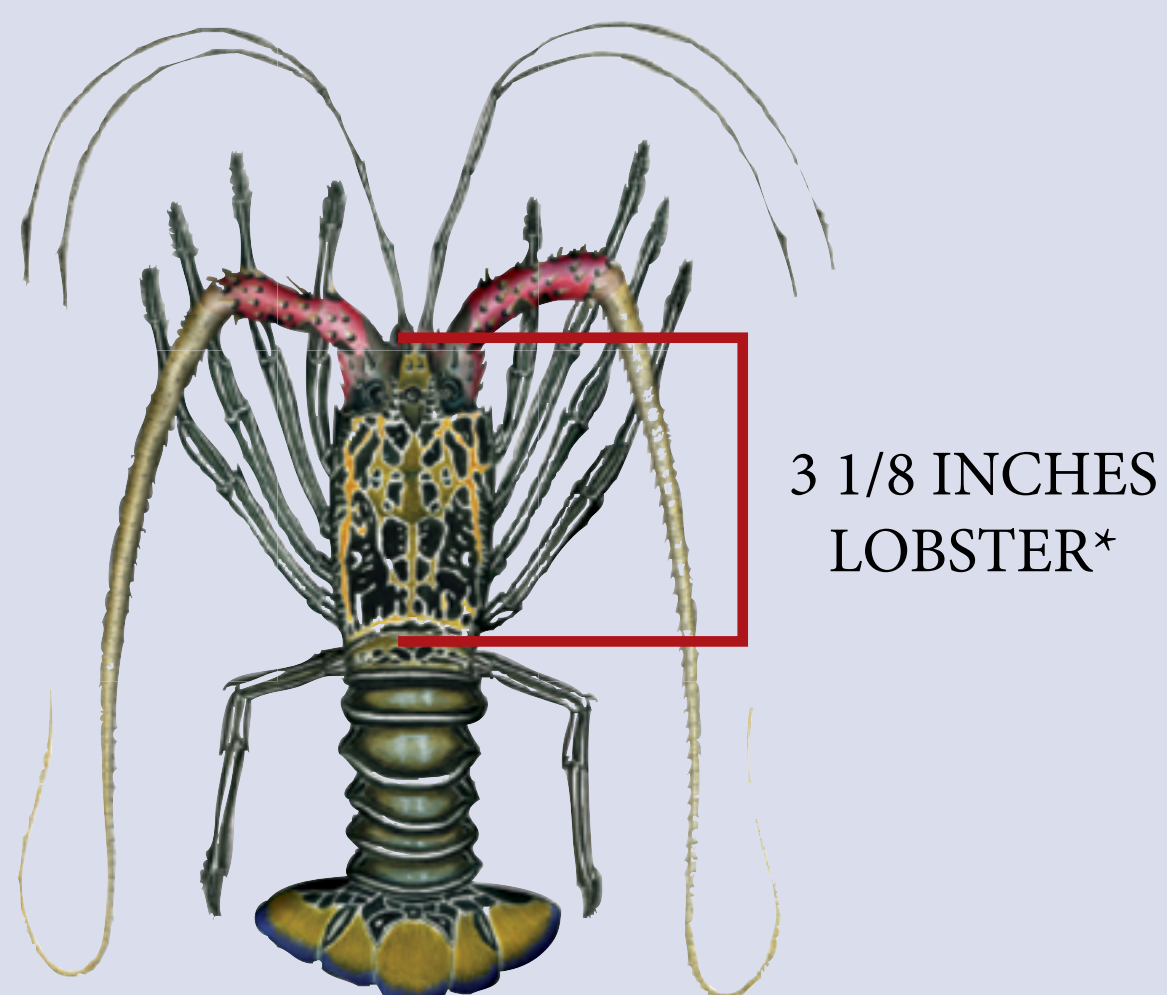
SLIPPER LOBSTER (PAPATA)

Slipper lobsters are illegal to collect using spear or snagging devices. It is illegal to harvest egg-bearing females.

AQUARIUM FISH & ORNAMENTAL SHELLS

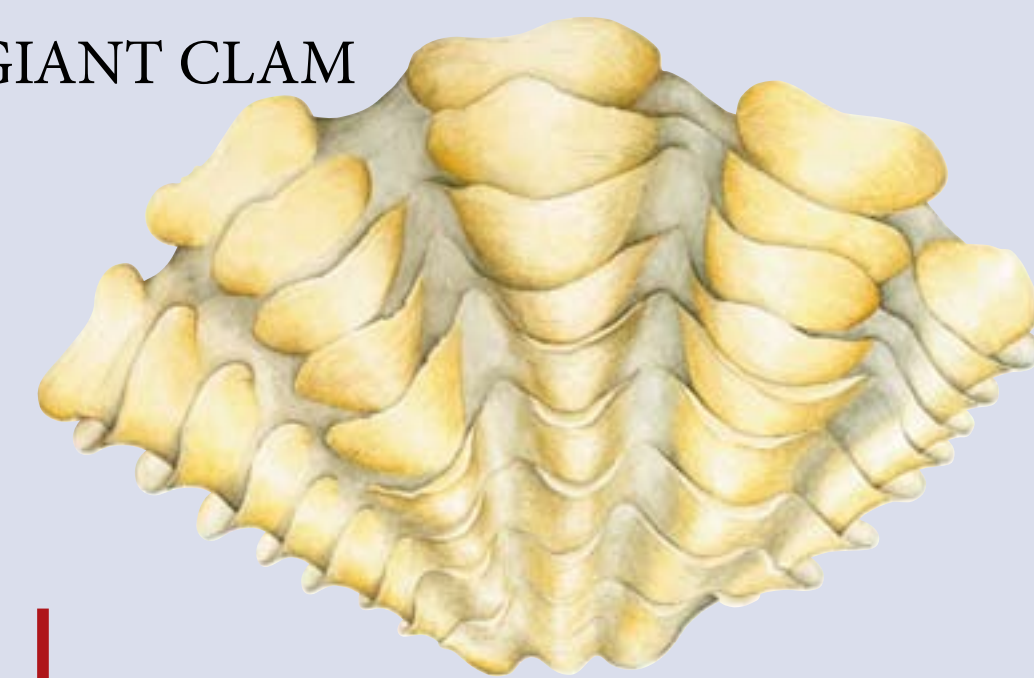
Harvesting of aquarium fish and commercial harvesting of ornamental shells require special permits.

LEGAL SIZE LIMITS

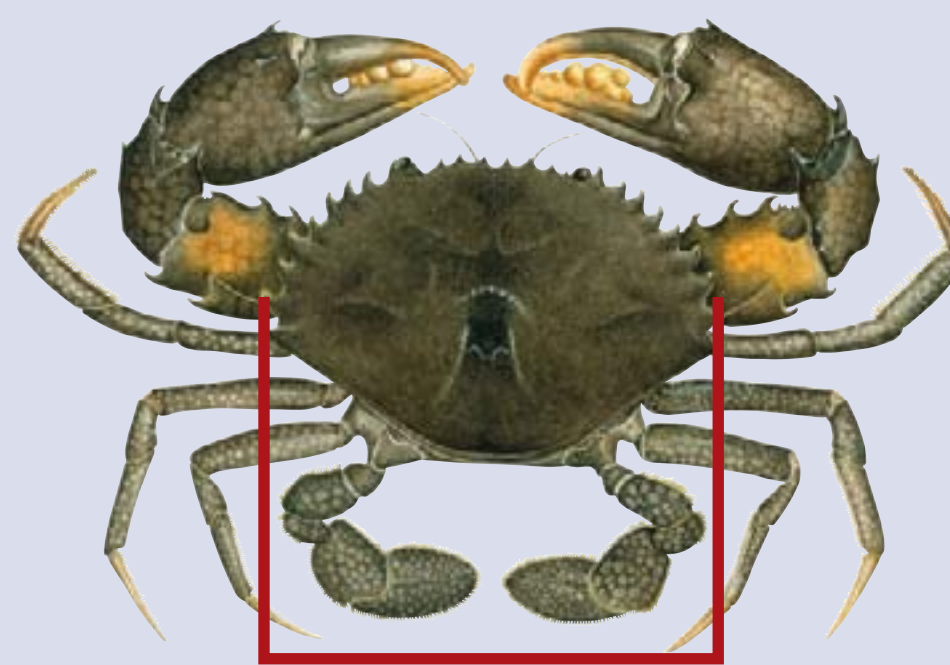


3 1/8 INCHES
LOBSTER*

GIANT CLAM



6 INCHES—PERSONAL USE
7 INCHES—COMMERCIAL USE



6 INCHES
MANGROVE CRAB*

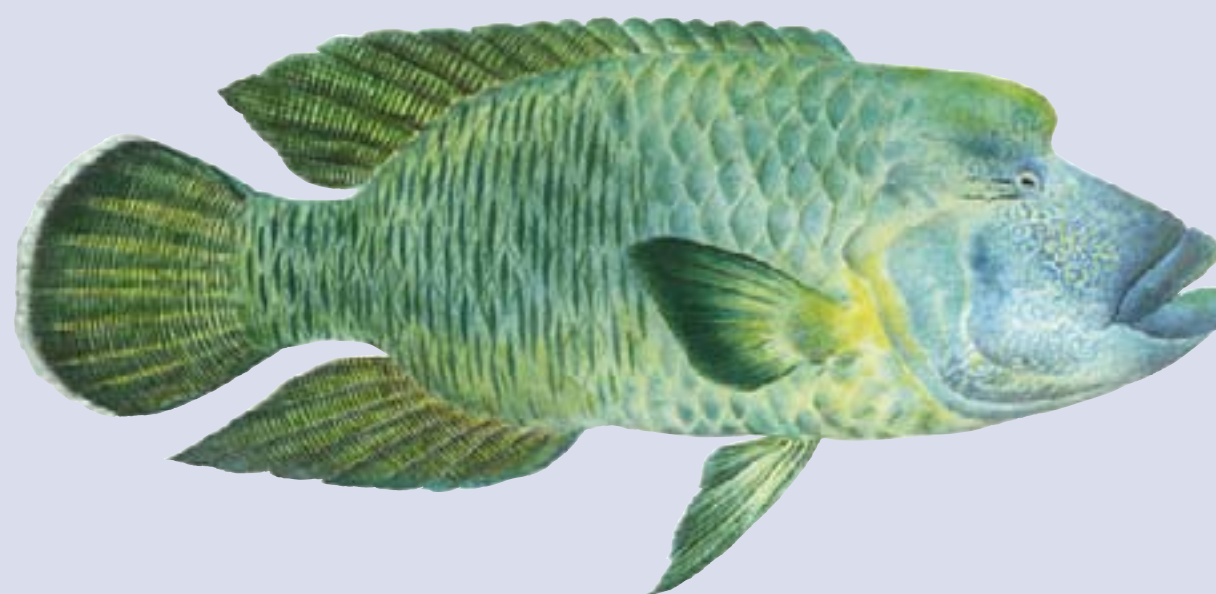


3 INCHES
COCONUT CRAB*

*No egg bearing females

BANNED SPECIES IN THE TERRITORY:

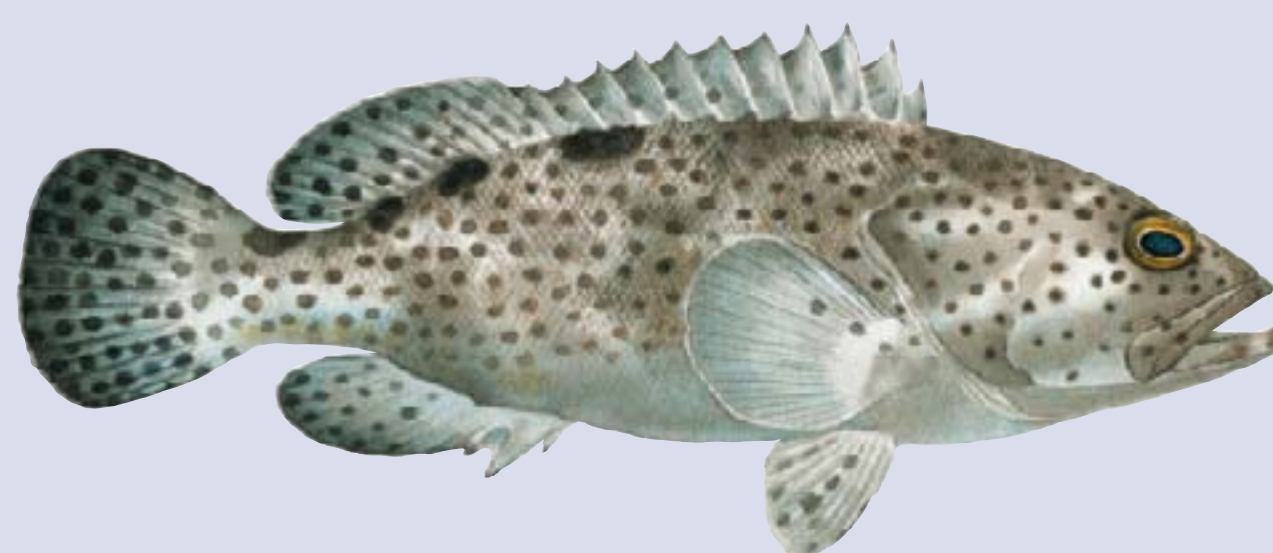
Unlawful to collect or possess any of the following species



Humphead Wrasse "Lalafi"



Bumphead parrotfish "Ulumako"



Giant Grouper "Gatala"



All Shark "Malie" Species

For more information on Illegal Fishing Methods, Gear Restrictions, Rose Atoll Wildlife Refuge, Enforcement & Penalties, please visit the Enforcement office at DMWR, Fagatogo or

call + 684 633 4456, 731-0729 or 733 9866.



NOAA
CORAL REEF
CONSERVATION PROGRAM