

St. Croix East End Marine Park Summary of Support (2014-2015)

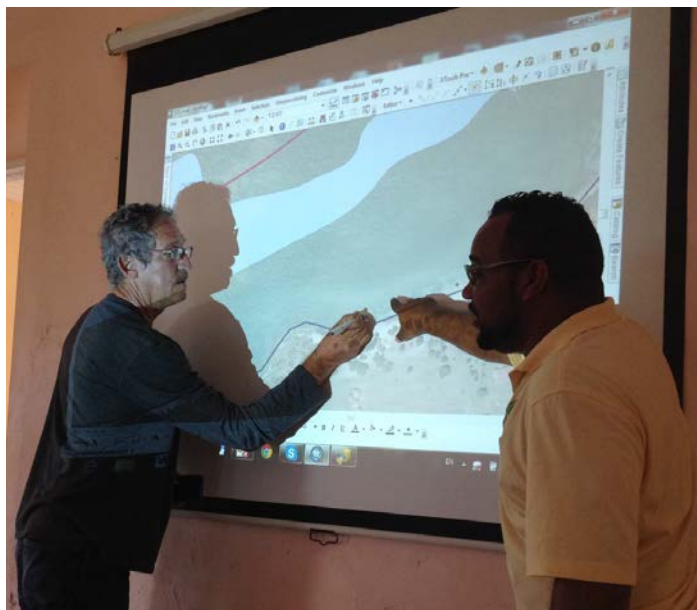
Background

The St. Croix East End Marine Park (STXEEMP) was established to protect territorially significant marine resources, and promote sustainability of marine ecosystems, including coral reefs, sea grass beds, wildlife habitats and other resources, and to conserve and preserve significant natural areas for the use and benefit of future generations. It is the first territorially designated and managed marine protected area.

The following activities were supported by TNC staff for the St. Croix East End Marine Park (STXEEMP) with the goal of promoting more effective management of the MPA:

Development and Coordination of Human Use Mapping Workshops and Maps

With recruiting and outreach assistance from DPNR management and staff of the St. Croix East End Marine Park, we convened partners and stakeholders to conduct the STXEEMP Coastal Use Mapping workshops at the TNC office on April 16 and 17, 2015. Designed to collect information on how a community is using a coastal or marine area, various stakeholders were invited to provide input on how they use the waters and coastal areas of the Park. The data helps resource managers understand both the range and intensity of key activities.



Participants mapping coastal activities using E-Beam™ technology. @ TNC

This report was supported by The Nature Conservancy under cooperative agreement award #NA13NOS4820145 from the National Oceanic and Atmospheric Administration's (NOAA) Coral Reef Conservation Program, U.S. Department of Commerce. The statements, findings, conclusions, and recommendations are those of the author(s) and do not necessarily reflect the views of NOAA, the NOAA Coral Reef Conservation Program, or the U.S. Department of Commerce.

Representatives from different marine sectors (recreation, watersports, marina, charter boating, SCUBA diving, and fishing industries) as well as NGOs and territorial and federal governmental partners participated to provide first-hand information on the spatial and temporal distribution of human use activities in the nearshore of the STXEEMP. The information was captured using participatory mapping which provides participants a map on which to indicate the location of human use activities, while moderators generate representative spatial data files in real time. E-Beam™ technology was used to aid the participatory mapping method.

Data collected during the mapping workshops has been made available on the Caribbean Regional Ocean Partnership (CROP) Portal (<http://planner.caribbean-mp.org/visualize/#x=-65.85&y=17.91&z=9&logo=true&basemap=ESRI+Ocean&tab=data>) in an open access format, and anyone can use the GIS mapping data reflecting the variety and extent of ocean uses. Additionally, we have created an outreach handout: STXEEMP Human Use Mapping Results (see below) that includes a summary of the workshops as well as maps of tourism and recreation, coastal infrastructure, and existing and potential restoration sites. The outreach handout has been distributed to the participants, managers, local environmental NGOs, and general public. We also highlighted and shared the results of this project through a Reef Resilience Case Study: *How do we use our Marine Space? Mapping Human Uses of the East End Marine Park*, <http://www.reefresilience.org/case-studies/u-s-virgin-islands-mpa-management/>.

Coordination of Management Plan Update

In February 2015 a meeting was coordinated to conduct a thorough review of the format and conservation strategies identified in the STXEEMP Management Plan Update. Leads were determined for each Conservation Strategy who would be responsible for evaluating the current relevance and developing additional details for each strategy. The draft files of the Management Plan Update were shared with DPNR so that they can complete the effort to update the Management Plan.



East End Marine Park

Human Uses Mapping

STXEEMP

What is Coastal Use Mapping?

A Coastal Use Mapping Project is designed to collect information on how a community uses a coastal or marine area. The data helps resource managers understand both the range and intensity of key activities.

What Happened?

On April 16 and 17, 2015, we mapped human activities in the St. Croix East End Marine Park (STXEEMP). Representatives from various marine sectors participated, including recreation, watersports, marinas, hotels, charter boats, SCUBA, and fishing as well as NGOs and governmental partners. **The resulting maps indicate uses of the STXEEMP!**



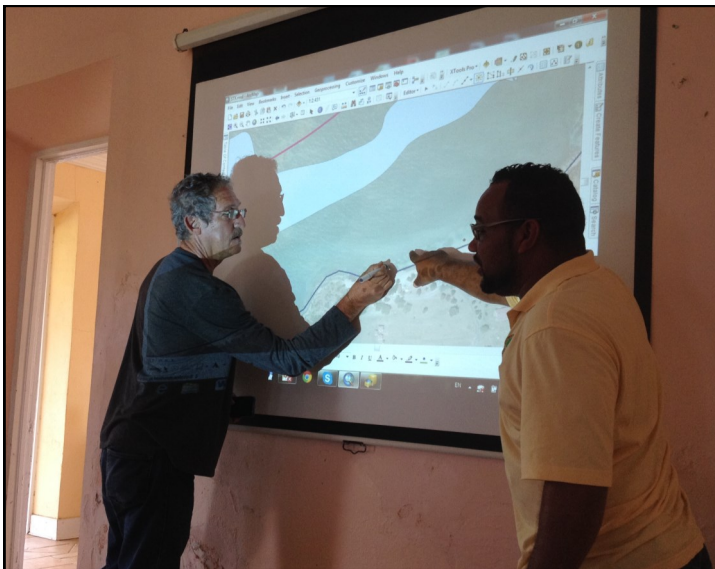
STXEEMP

Management Agency:
Department of Planning and Natural Resources

Location:
St. Croix, US Virgin Islands

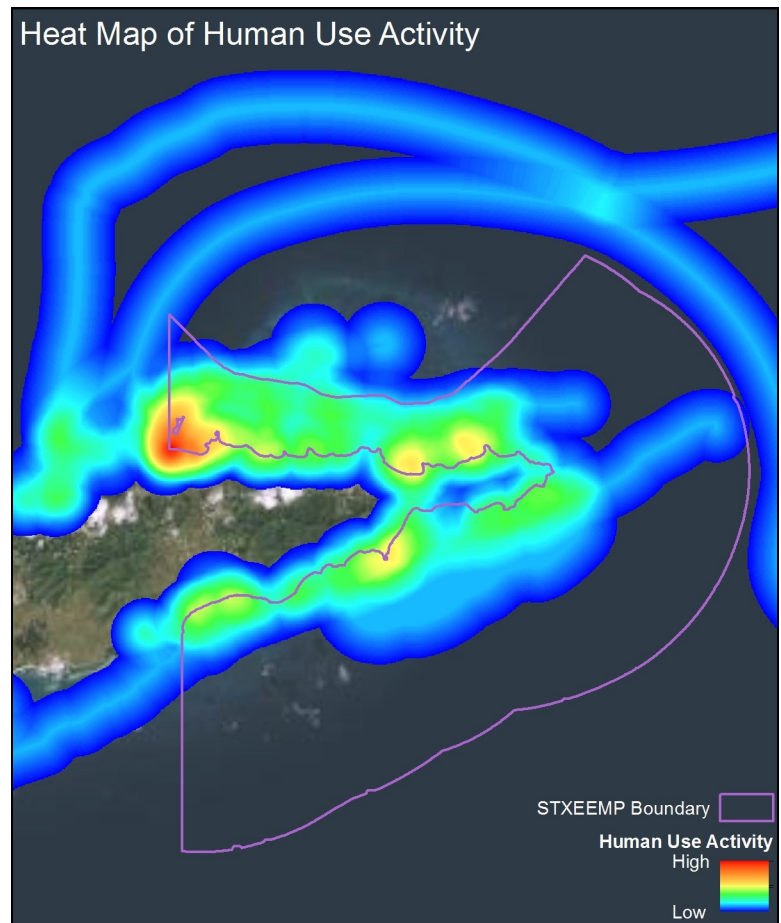
Area: 150 km²

Habitat: Seagrass, Coral Reef, Mangrove, Sand



^ Representatives mapped their uses of the marine space in real time using E-Beam™ technology.

> A heat map of cumulative activities shows the most intensely used areas of the STXEEMP in red.



For More information, please contact:

Migdalia Roach
St. Croix East End Marine Park
migdaliam.roach@dpnr.vi.gov
340-718-3367

Nancy Graff
The Nature Conservancy
ngraft@tnc.org
340-718-5575



East End Marine Park

Human Uses Mapping

STXEEMP

These activities were mapped during the April workshop: Boat Ramps and Slips, Marinas, Moorings, Recreational and Commercial Boating, Motorized and Non-motorized Personal Watercraft, Dive and Snorkeling Sites, Marine Restoration, Camping Beach Areas, Fish and Conch Fishing Area, and Surfing. These data are available on the CROP Data Portal (<http://caribbean-mp.org/en/>) as maps, GIS mapping layers, and analytical products. Base map source: Esri, DigitalGlobe, GeoEye, Earthstar Geographics, CNES/Airbus DS, USDA, USGS, AEX, Getmapping, Aerogrid, IGN, IGP, swisstopo, and the GIS User Community.

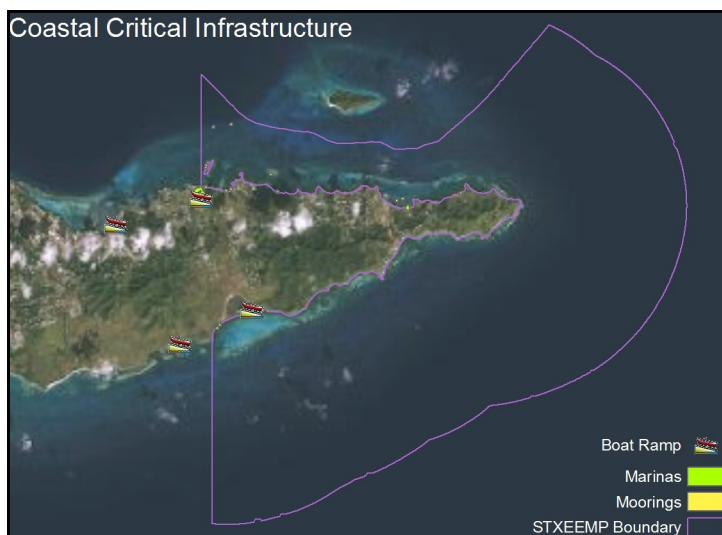


Figure 1. Map of critical coastal infrastructure including boat ramps, marinas and moorings.

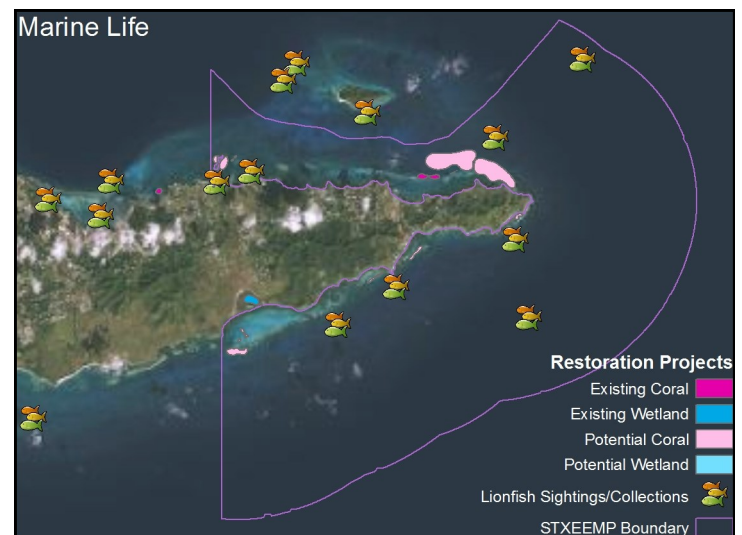


Figure 2. Map of marine resources including current and potential restoration sites.

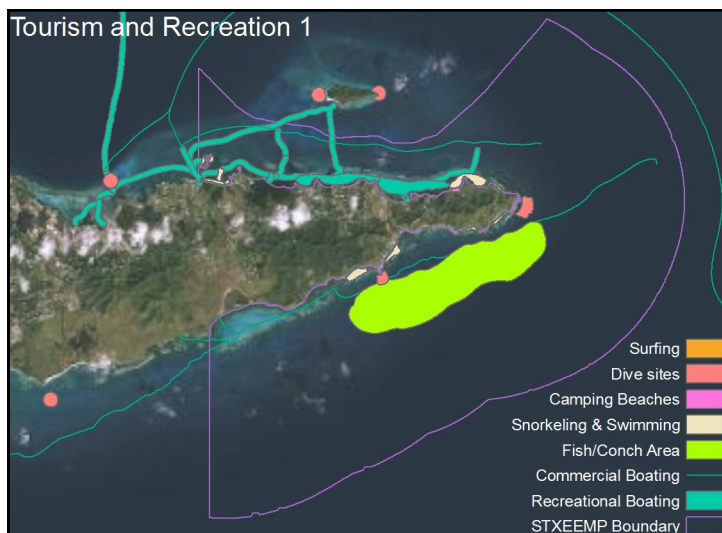


Figure 3. Map of tourism and recreational activities including surfing, diving, camping, snorkeling, fishing, and boating.

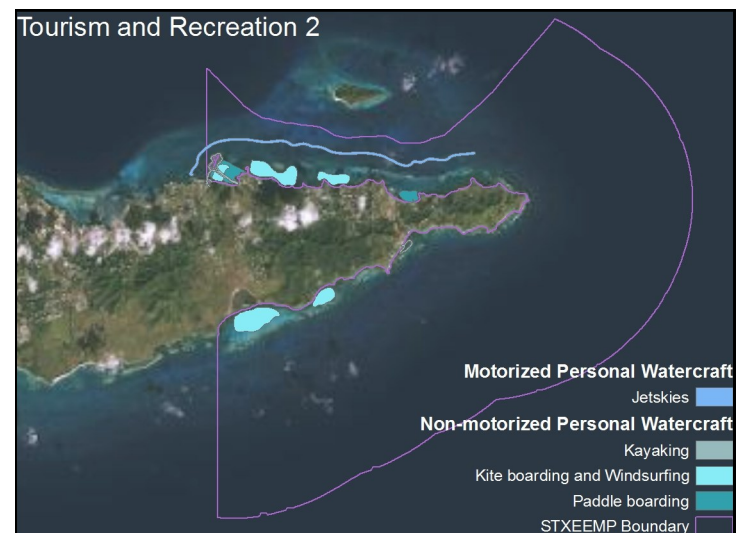


Figure 4. Map of motorized and non-motorized personal watercraft areas and routes.

For More information, please contact:

Migdalia Roach
St. Croix East End Marine Park
migdalia.roach@dpnr.vi.gov
340-718-3367

Nancy Graff
The Nature Conservancy
ngraff@tnc.org
340-718-5575