

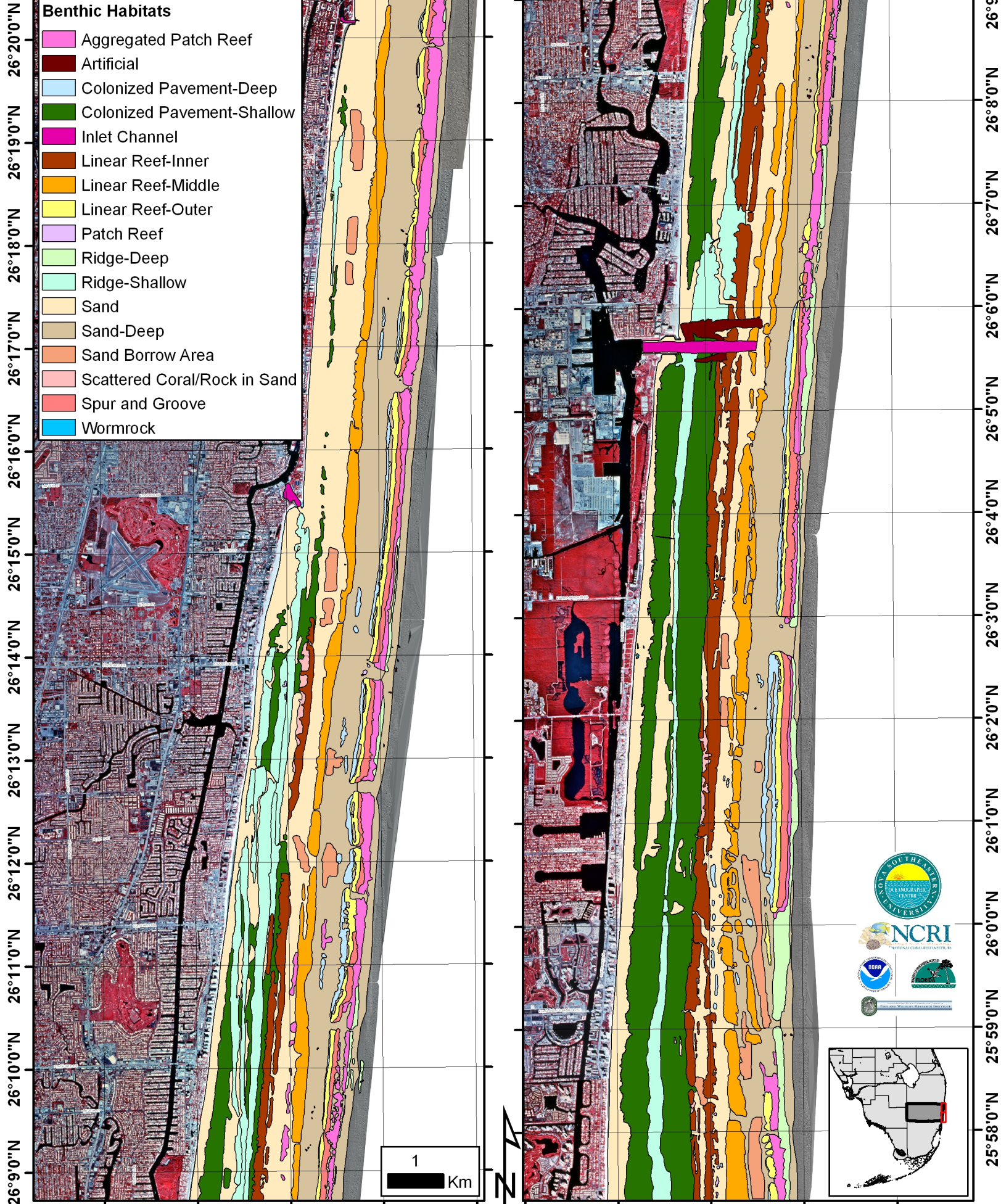
80°7'0"W 80°6'0"W 80°5'0"W 80°4'0"W 80°3'0"W 80°7'0"W 80°6'0"W 80°5'0"W 80°4'0"W

North Broward County

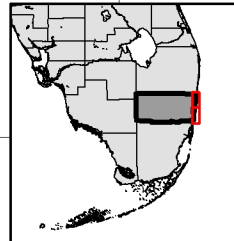
Benthic Habitats

- Aggregated Patch Reef
- Artificial
- Colonized Pavement-Deep
- Colonized Pavement-Shallow
- Inlet Channel
- Linear Reef-Inner
- Linear Reef-Middle
- Linear Reef-Outer
- Patch Reef
- Ridge-Deep
- Ridge-Shallow
- Sand
- Sand-Deep
- Sand Borrow Area
- Scattered Coral/Rock in Sand
- Spur and Groove
- Wormrock

South Broward County



1 Km



26°20'0"N 26°19'0"N 26°18'0"N 26°17'0"N 26°16'0"N 26°15'0"N 26°14'0"N 26°13'0"N 26°12'0"N 26°11'0"N 26°10'0"N 26°9'0"N 26°9'0"N 26°8'0"N 26°7'0"N 26°6'0"N 26°5'0"N 26°4'0"N 26°3'0"N 26°2'0"N 26°1'0"N 26°0'0"N 25°59'0"N 25°58'0"N