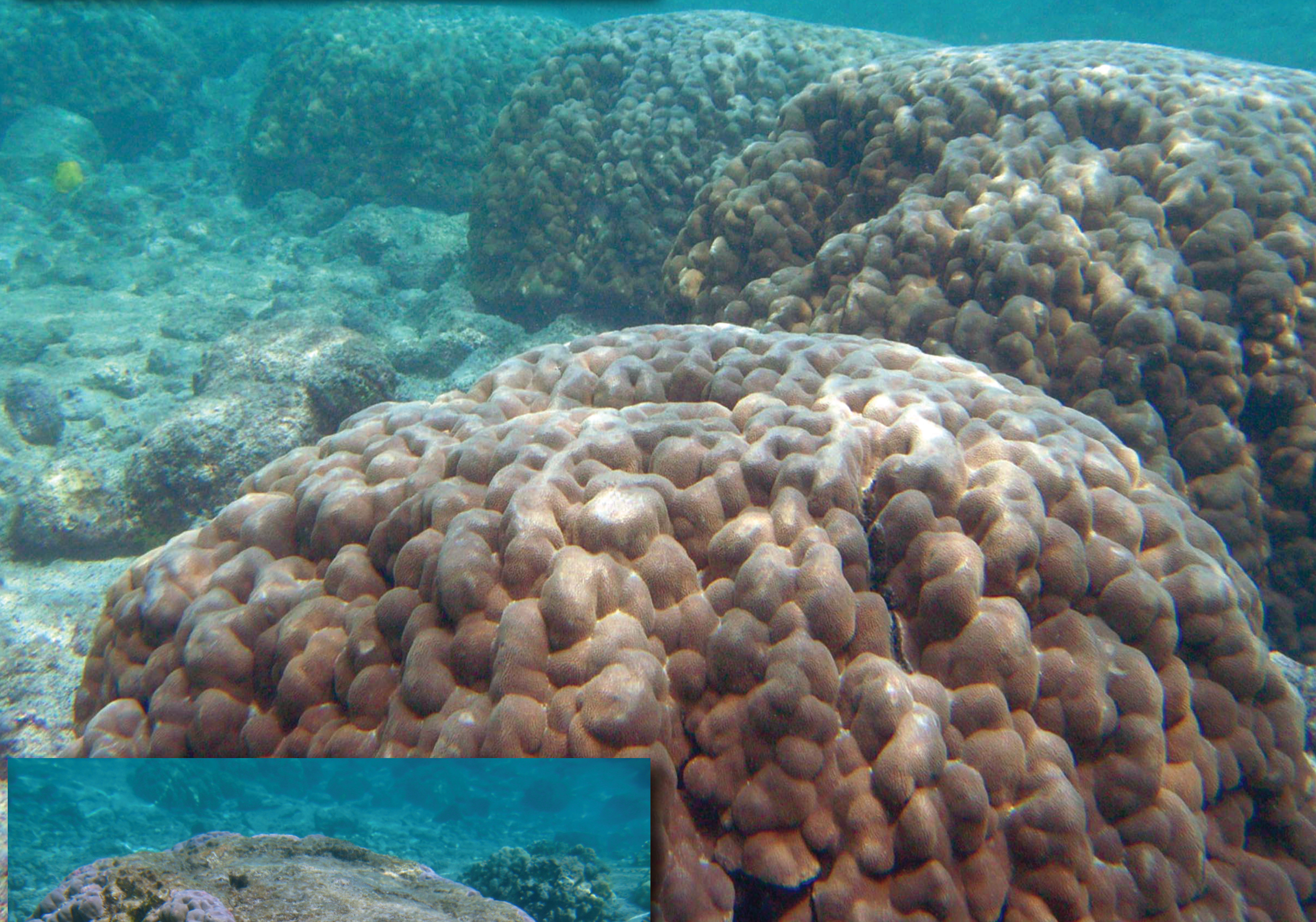


PROTECT KAHALU'U BAY!



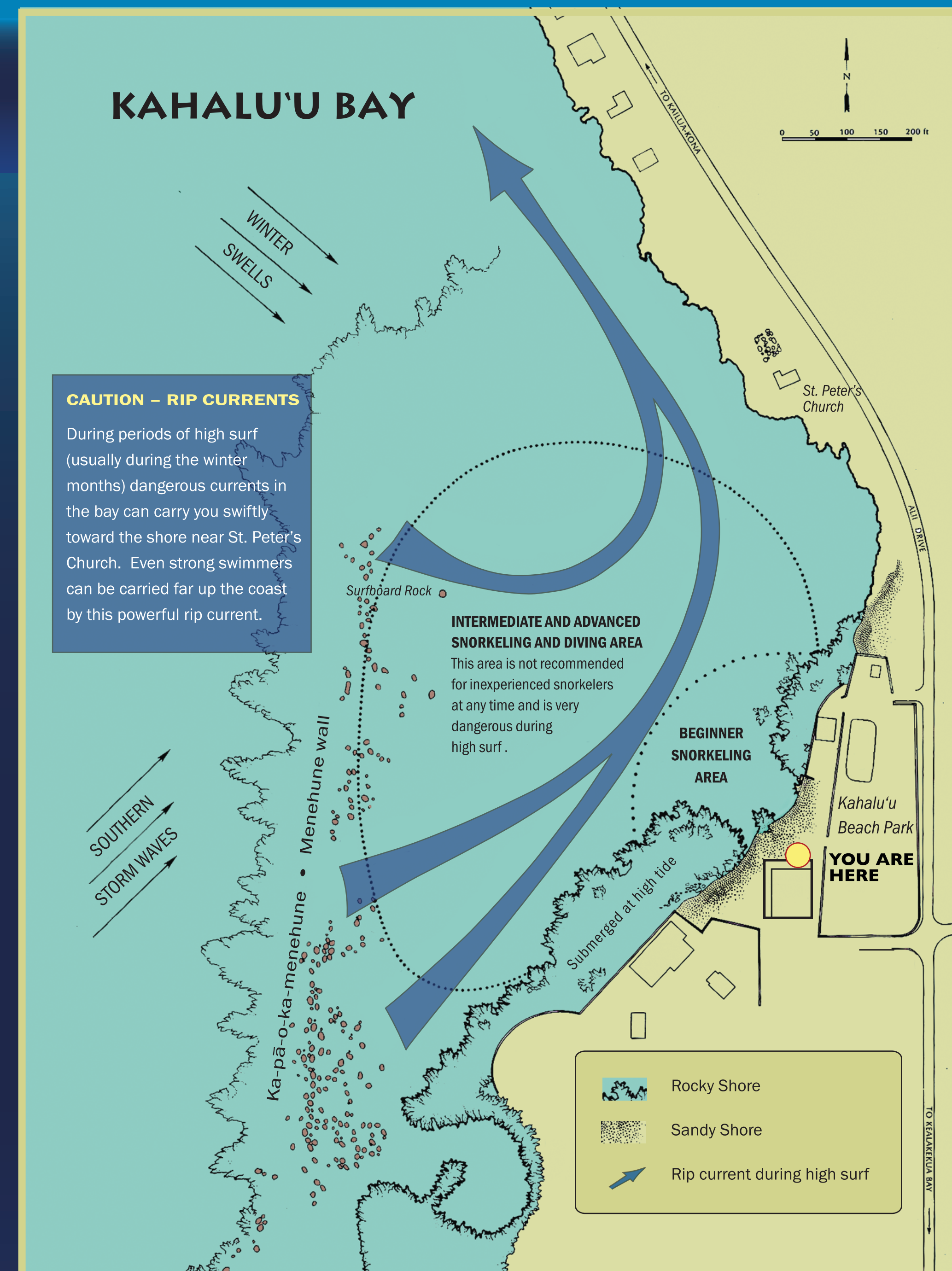
Coral is crucial.

Coral reefs are among the most diverse ecosystems in the world. Sometimes called the "rainforests of the sea," they supply shelter and food to abundant species of marine life, protect beaches from erosion, and even provide for important scientific discoveries in medicine and human health.







Coral is easily damaged.

Coral tissue is easily damaged when touched, scraped or stood upon. These coral reefs are extremely delicate and rare. Their very existence is threatened, not just at Kahalu'u Bay, but the world over.



OCEAN SAFETY TIPS:

-  **If in doubt, don't go out.**
-  **Do NOT touch any marine life.**
-  **Respect others.**
-  **Swim only in designated lifeguard areas.**
-  **Read all posted signs before entering the water.**
-  **Never leave children unattended.**

PLEASE HELP PROTECT THE LIVING REEF:

DO NOT STAND ON OR TOUCH THE CORAL.

Touching or standing on coral damages and kills coral polyps. Stand only on sandy or rocky bottom if you must. Be careful not to accidentally kick corals with swimming fins.

DO NOT FEED THE FISH.

Fish play an important role in keeping the reef clean through what they eat. Feeding the fish disrupts their natural behavior, causing some fish to become aggressive and others to get sick.

DO NOT DISTURB THE TURTLES.

The green sea turtles that feed and rest at Kahalu'u Bay are endangered species. Do not approach them. Under both Federal and Hawai'i State laws it is illegal to harass or harm sea turtles.

APPLY WATERPROOF SUNSCREEN 15 MINUTES BEFORE SWIMMING.

Give the sunscreen time to absorb before entering the water. This helps protect your skin as well as reef life from the oily residues sunscreen leaves in the water.

THROW AWAY YOUR TRASH.

Trash left on the beach ends up in the ocean and harms sea life.



**E MALAMA
I NA KO'A
KE KAI.**

**PROTECT
OUR
REEFS.**

MAHALO TO:
The Kohala Center
Kona Reefers Dive Club
Kumu Pono Associates LLC
Hawai'i Tourism Authority
Kamehameha Investment Corporation
Outrigger Keauhou Beach Resort
National Oceanic and Atmospheric Administration
University of Hawai'i Sea Grant College Program
County of Hawai'i Dept. of Research and Development

PHOTO CREDITS:
Samantha Birch
Ziggy Livnat
David R. Schrichte
Doug Sell
James D. Watt
David B. Fleetham
Doug Perrine
SeaPics.com
Andrew Walsh

DESIGN: Richard Duggan ~ Dare Design