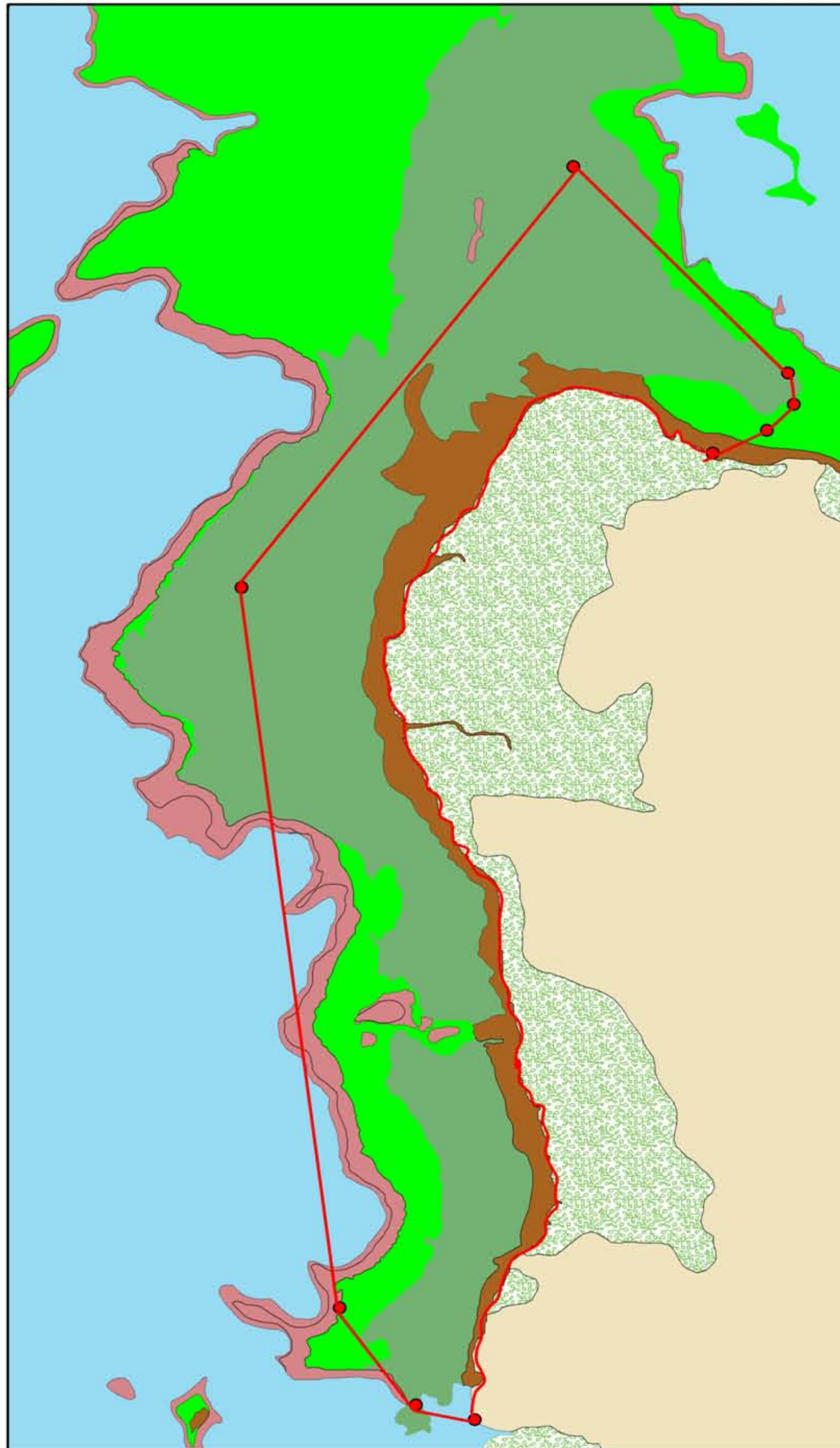
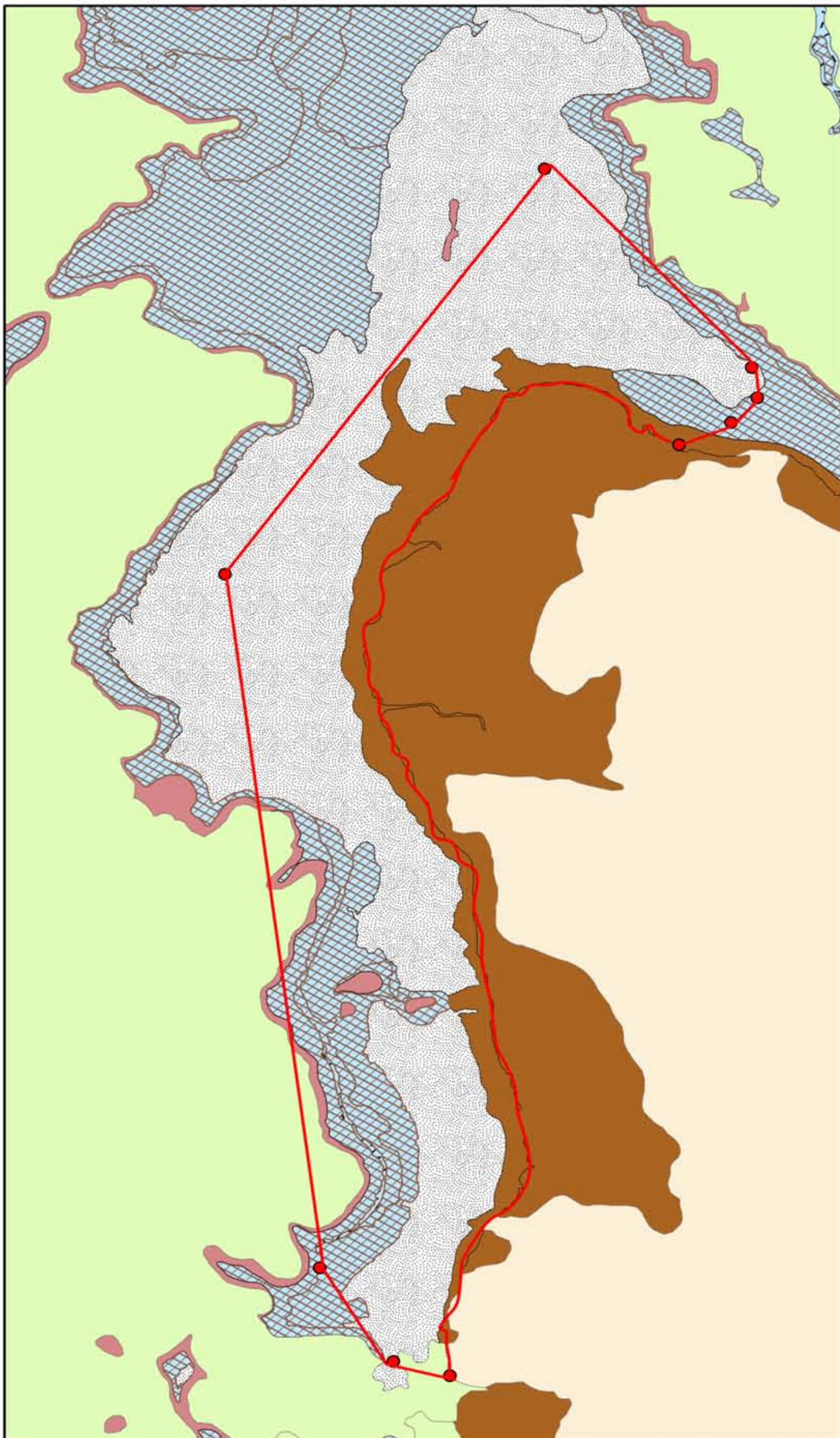


# Ngermasch Conservation Area



- Land (Beluu)
- Mud (Ilachetomel)
- Sand (Chelechol)
- Pavement (Bereu)
- Reef (Kerker el ngarangii a merand)
- Rubble (Chelemecham el merand)
- Conservation area Approximate boundary

- Land (Beluu)
- Mangrove (Keburs)
- Uncolonized (Diak a ngarang a duubech er ngii)
- Seagrass (Char)
- Macroalgae (Kemokem)
- Turf algae (Iumd)
- Corals (Merand)

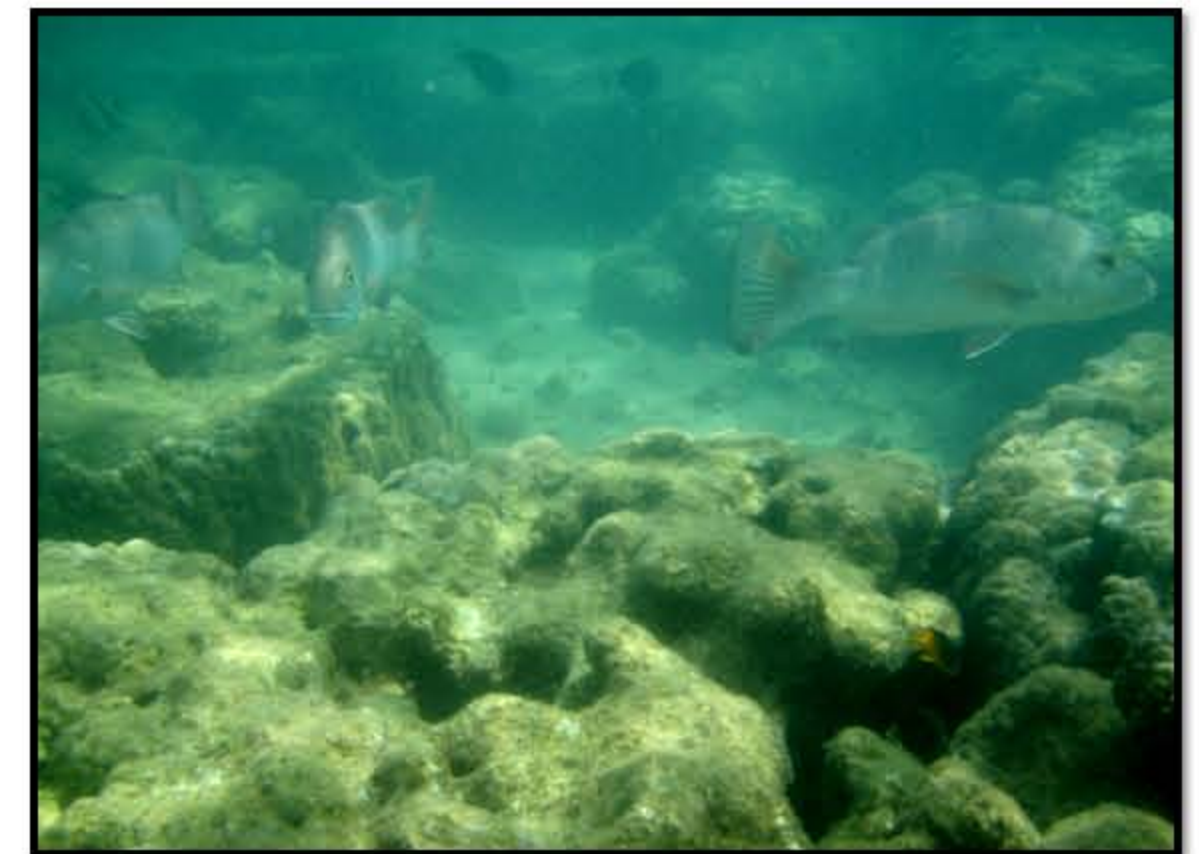
## Major Cover (Ngera nga er a bertakl)



Iumd el ngara delul a char



Delul a char



Kedesau el iengel el debetik er a lemau

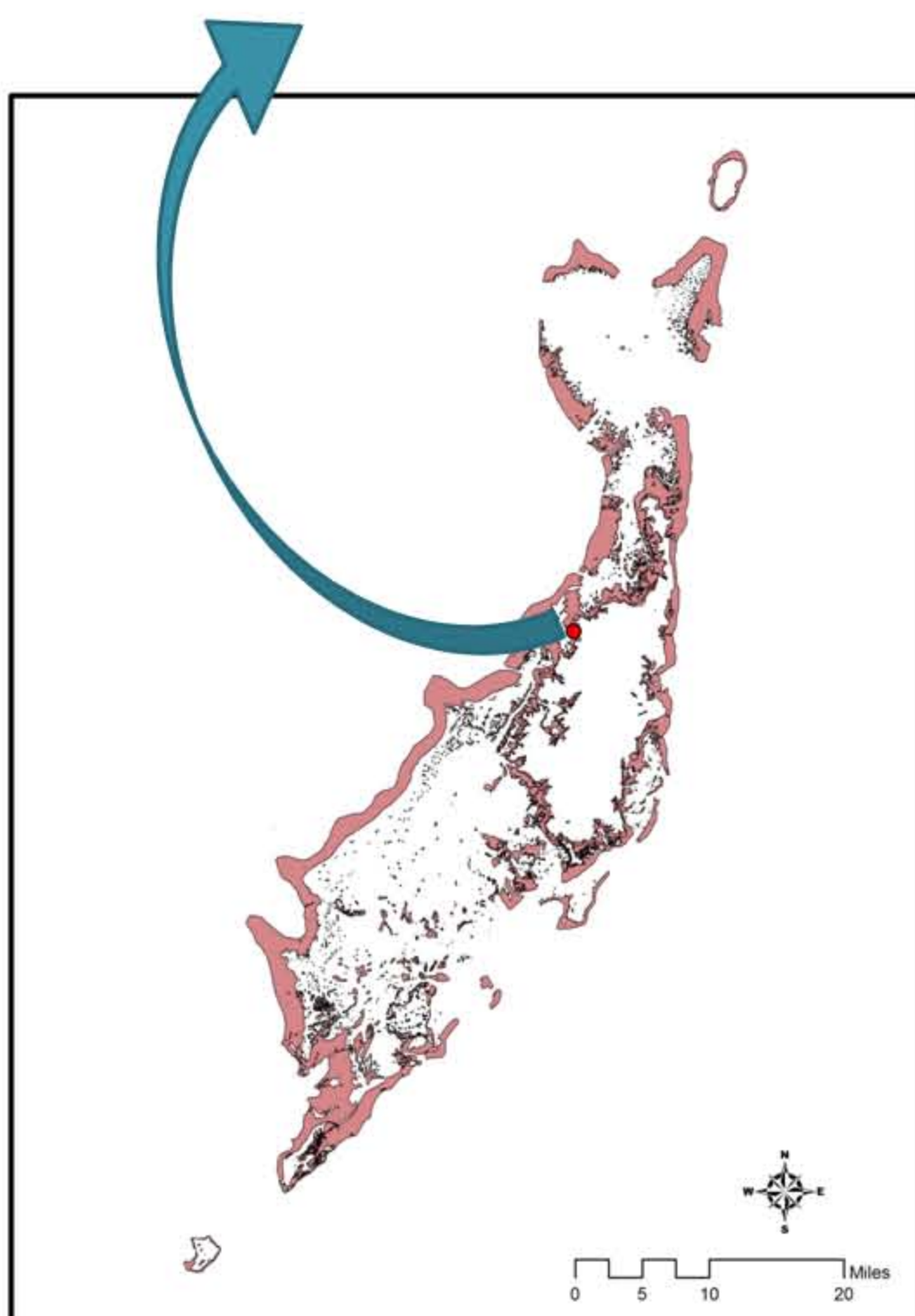


Mengelekel a meas el ngara delul a char



Cheremrum el ngara chelechol ra delul a char

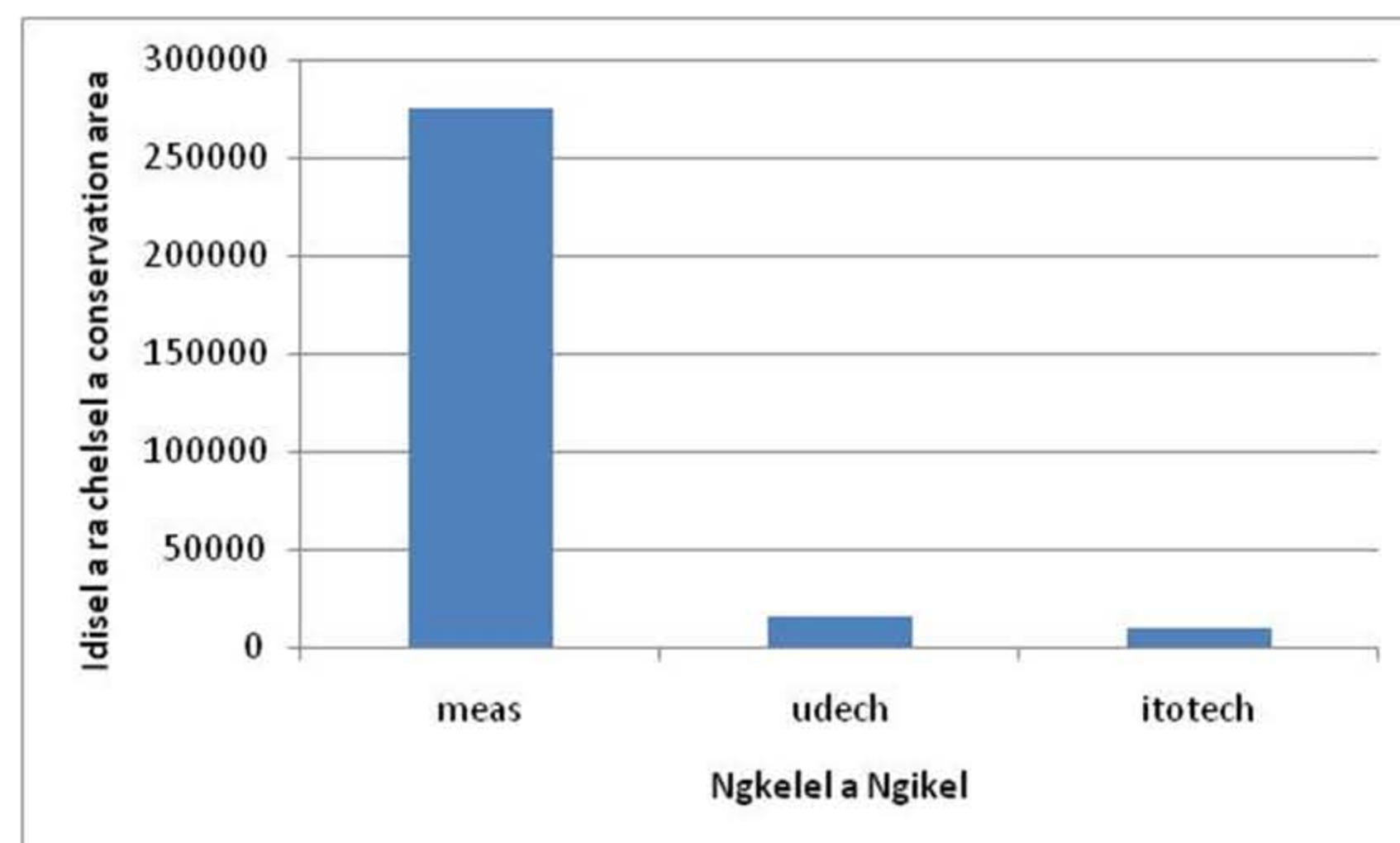
Benthic habitat map: NOAA/NCOS/NCCOS/CCMA/ Biogeography Team; Printing: Funding from Government of Spain; Compiled by Palau International Coral Reef Center



Klungel a Conservation Area  $3 \text{ km}^2$  or 300 times ra klungel a Asahi kurand

Bekerkard el line a daitai engochotii a boundary ra Conservation Area

Survey ochotii el kmo ngarangii a betok er a 7 million el cheremrum ma ngara 16,000 el ngimes ma 270,000 el meas ma mekesai er 5,000 udech ma itotech er a chelsel a Ngermasch Conservation Area.



With funding support from:  
National Fish and Wildlife Foundation,  
Agencia Espanola de Cooperacion Internacional para el Desarrollo,  
NOAA Coral Reef Conservation Program.

Shallow water habitat map was produced by  
NOAA/NCOS/NCCOS/CCMA/Biogeography Team.

For information, contact the Palau International Coral Reef Center Research Department (488-6950).

