

Alaska

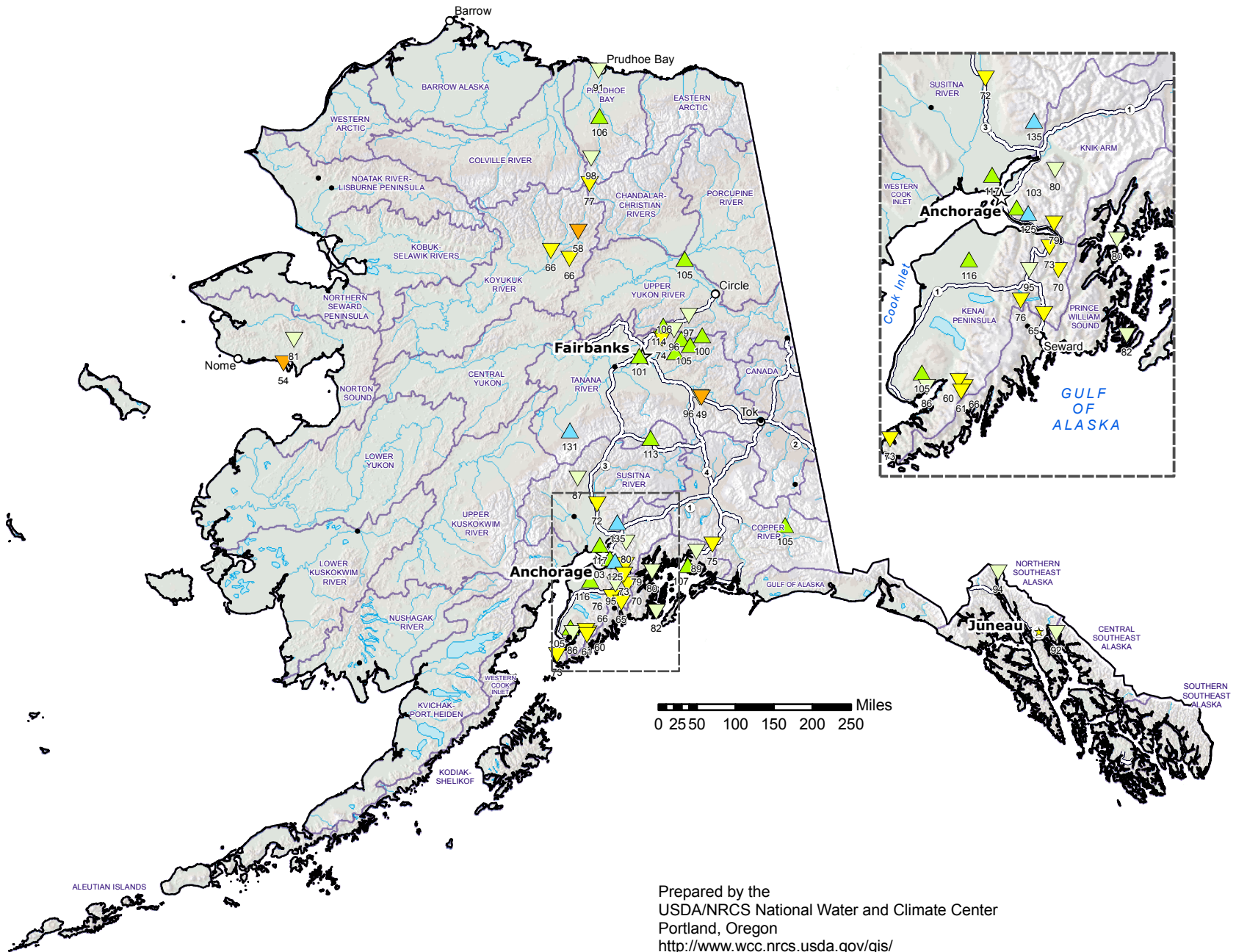
SNOTEL Water Year to Date (WYTD) Precipitation % of Normal

Apr 30, 2013

**Current WYTD
Precipitation
% of 1981-2010
Average**

- ▲ > 160%
- ▲ 140-160%
- ▲ 120-139%
- ▲ 100-119%
- ▼ 80-99%
- ▼ 60-79%
- ▼ 40-59%
- ▼ 1-39%
- + 0%
- Unavailable*

*Provisional Data
Subject to Revision*



Prepared by the
USDA/NRCS National Water and Climate Center
Portland, Oregon
<http://www.wcc.nrcs.usda.gov/gis/>

** Data unavailable at time of posting or unavailable long-term normal.*