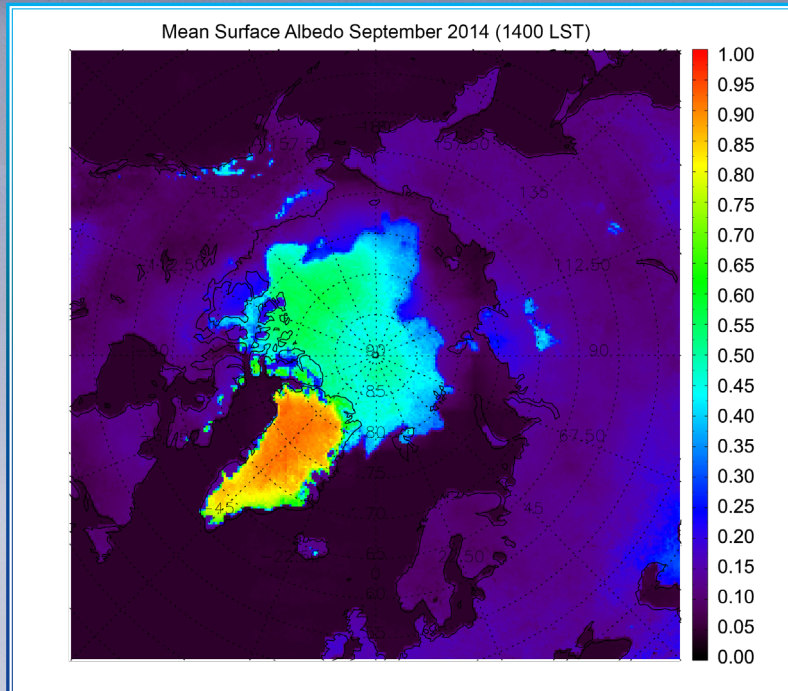




Polar Pathfinder - Extended



CLIMATE DATA RECORD SPECIFICATIONS

- Coverage: Arctic and Antarctic
- Projection: EASE grid
- Spatial resolution: 25km
- Twice daily composites (multiple orbits) at 4:00 and 14:00 local solar time for the Arctic, and 02:00 and 14:00 for the Antarctic
- 1982–present
- Updated daily

VARIABLES TO THIS

CLIMATE DATA RECORD

- Surface temperature
- Surface albedo
- Surface radiative flux
- Cloud mask
- Sea ice thickness
- Top of atmosphere radiative flux
- Surface type
- Cloud particle size
- Cloud optical depth
- Cloud top pressure
- Cloud top temperature
- Cloud type

SOME USES OF THIS

CLIMATE DATA RECORD

- Near real-time monitoring of Arctic and Antarctic surface and atmospheric characteristics
- Studies of recent climate change in the polar regions
- Analysis of climate feedbacks and interactions
- Regional and global climate model verification/validation

EXTENDED AVHRR POLAR PATHFINDER

<https://www.ncei.noaa.gov/products/climate-data-records/extended-avhrr-polar-pathfinder>

CLIMATE DATA RECORD INFORMATION:

<https://www.ncei.noaa.gov/products/climate-data-records>

NOAA's Climate Data Record (CDR)