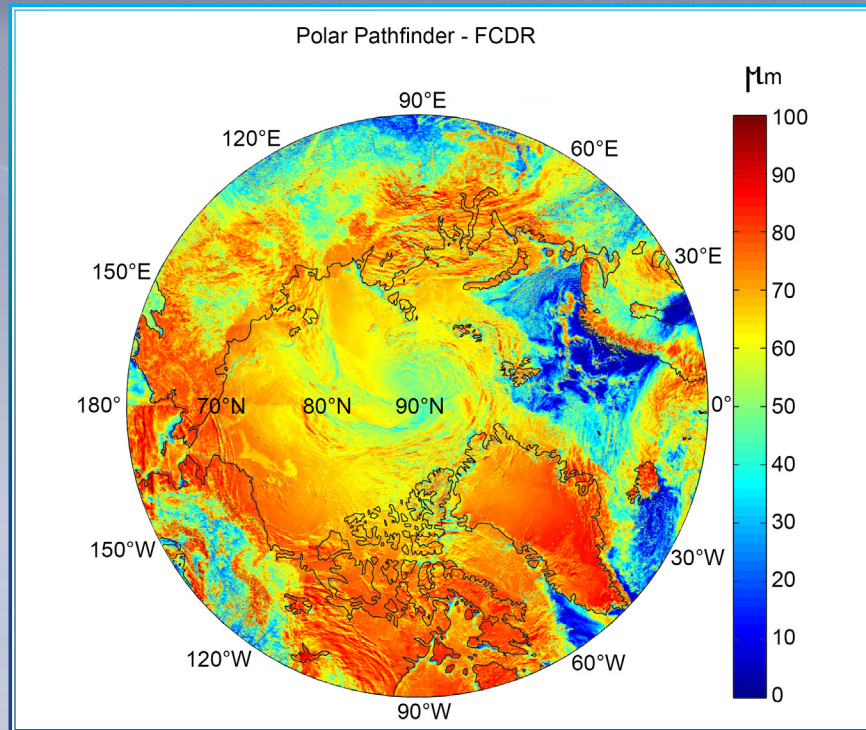




Polar Pathfinder FCDR



CLIMATE DATA RECORD SPECIFICATIONS

- Coverage: Arctic and Antarctic
- Projection: EASE grid
- Spatial resolution: 5km
- Twice daily composites (multiple orbits) at 04:00 and 14:00 local solar time for the Arctic, and 02:00 and 14:00 for the Antarctic
- 1982–present
- Updated daily

VARIABLES TO THIS

CLIMATE DATA RECORD

- Brightness Temperatures from: AVHRR (Ch3B, Ch4, Ch5) and VIIRS (M12, M15, M16)
- Reflectance from: AVHRR (Ch1, Ch2) and VIIRS (I1, I2)

SOME USES OF THIS

CLIMATE DATA RECORD

- The primary use of this CDR is for the derivation of higher-level geophysical parameters:
 - Surface temperature
 - Albedo
 - Cloud properties
- It is the main input to the extended AVHRR Polar Pathfinder (APP-x) product

AVHRR POLAR PATHFINDER

<https://www.ncei.noaa.gov/products/climate-data-records/avhrr-polar-pathfinder>

CLIMATE DATA RECORD INFORMATION:

<https://www.ncei.noaa.gov/products/climate-data-records>

NOAA's Climate Data Record (CDR)