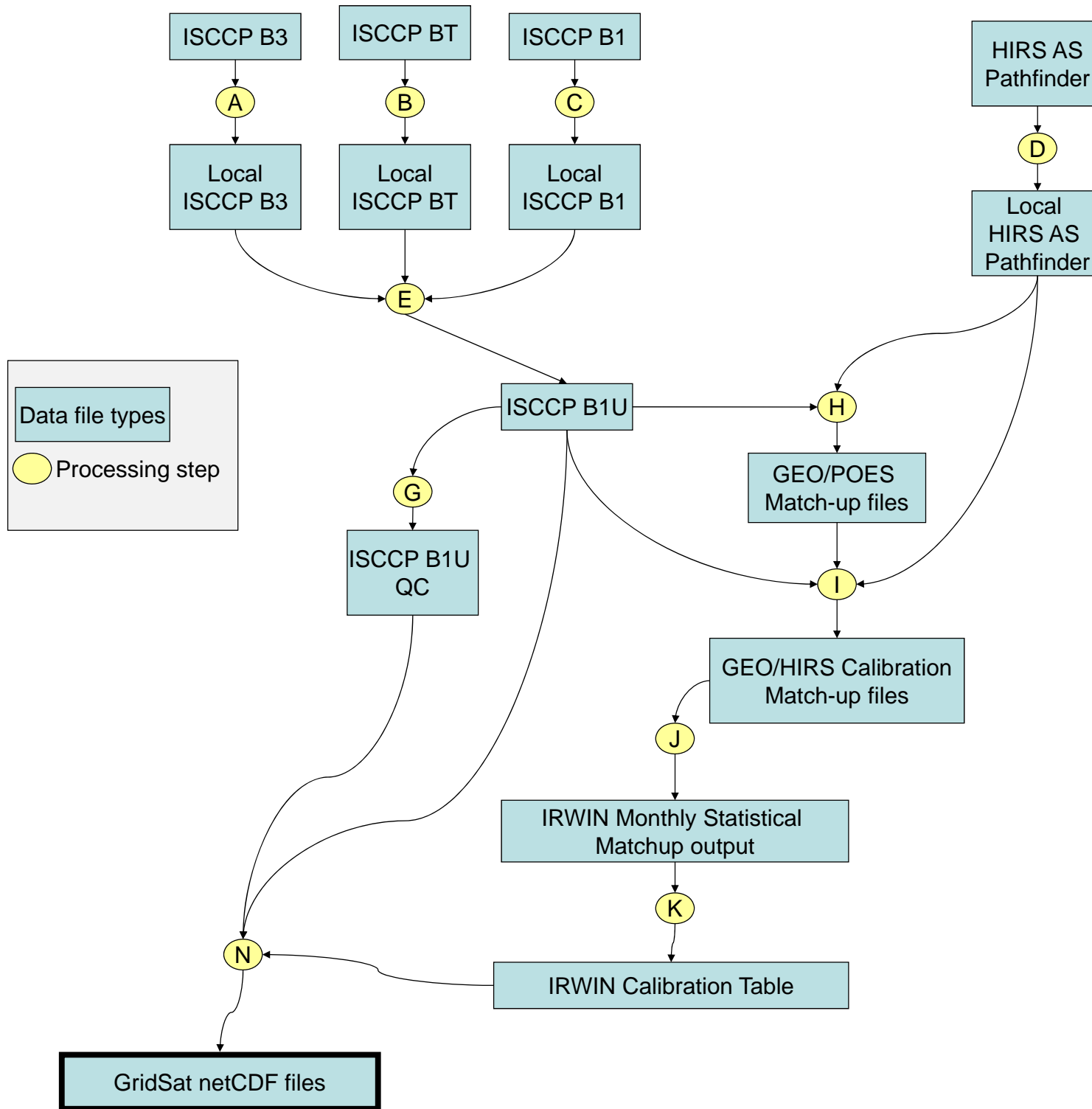


GridSat Data Flow Diagram

CDRP-DIA-0610 Rev 1
(01B-02)
02/12/15



Processing summary steps

- A. Obtain local copy of all ISCCP B3 files
- B. Obtain local copy of all ISCCP BT files
- C. Obtain local copy of all ISCCP B1 files
- D. Obtain local copy of all HIRS All sky files
- E. Create B1U file
- F. n/a
- G. Run B1U Quality Control algorithm
- H. Run temporal match file algorithm
- I. Run spatio-temporal HIRS/B1U matchups
- J. Collect calibration statistics by satellite
- K. Convert daily and monthly summaries
- L. n/a
- M. n/a
- N. Create GridSat B1 files

See other GridSat documentation for more details