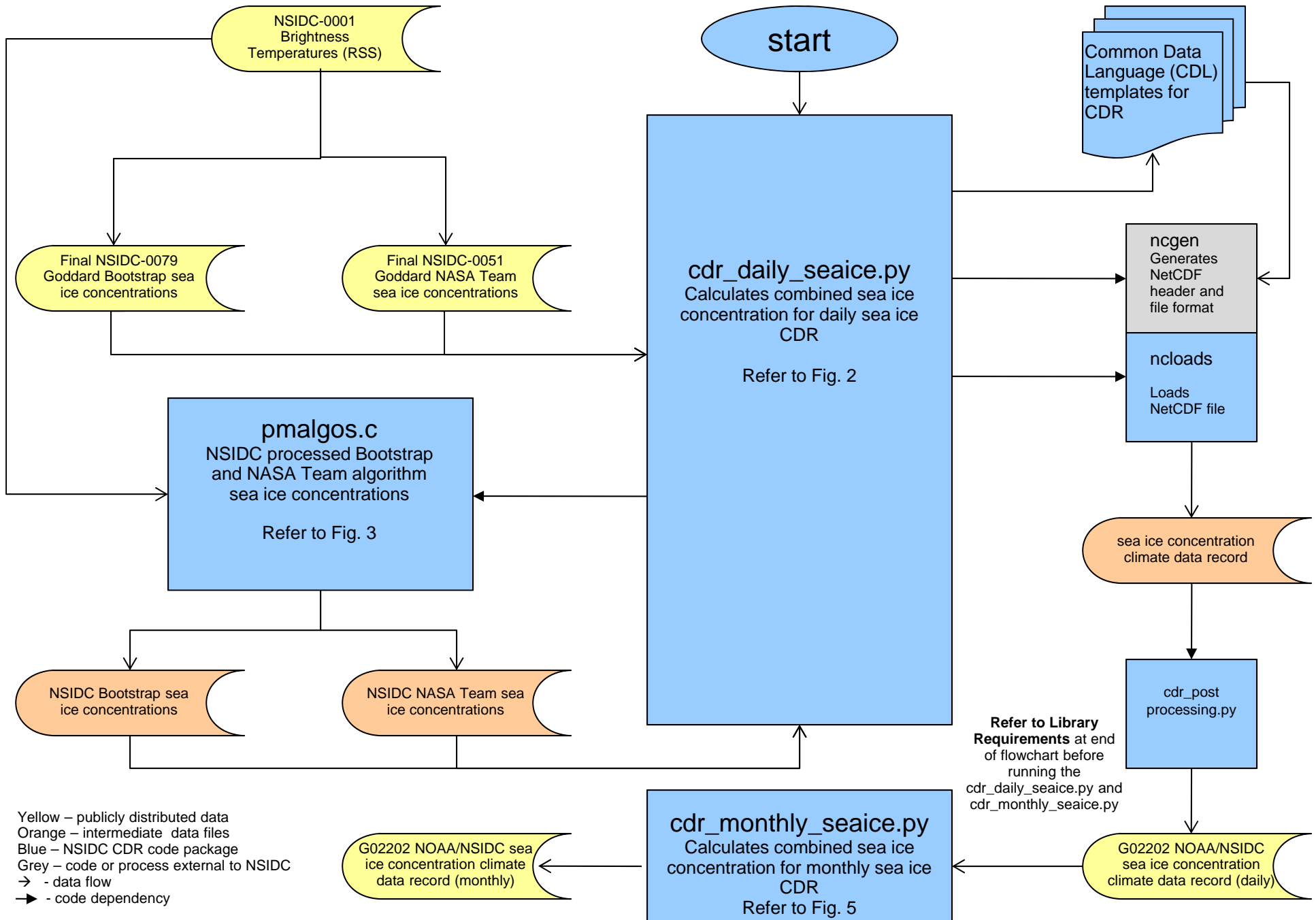
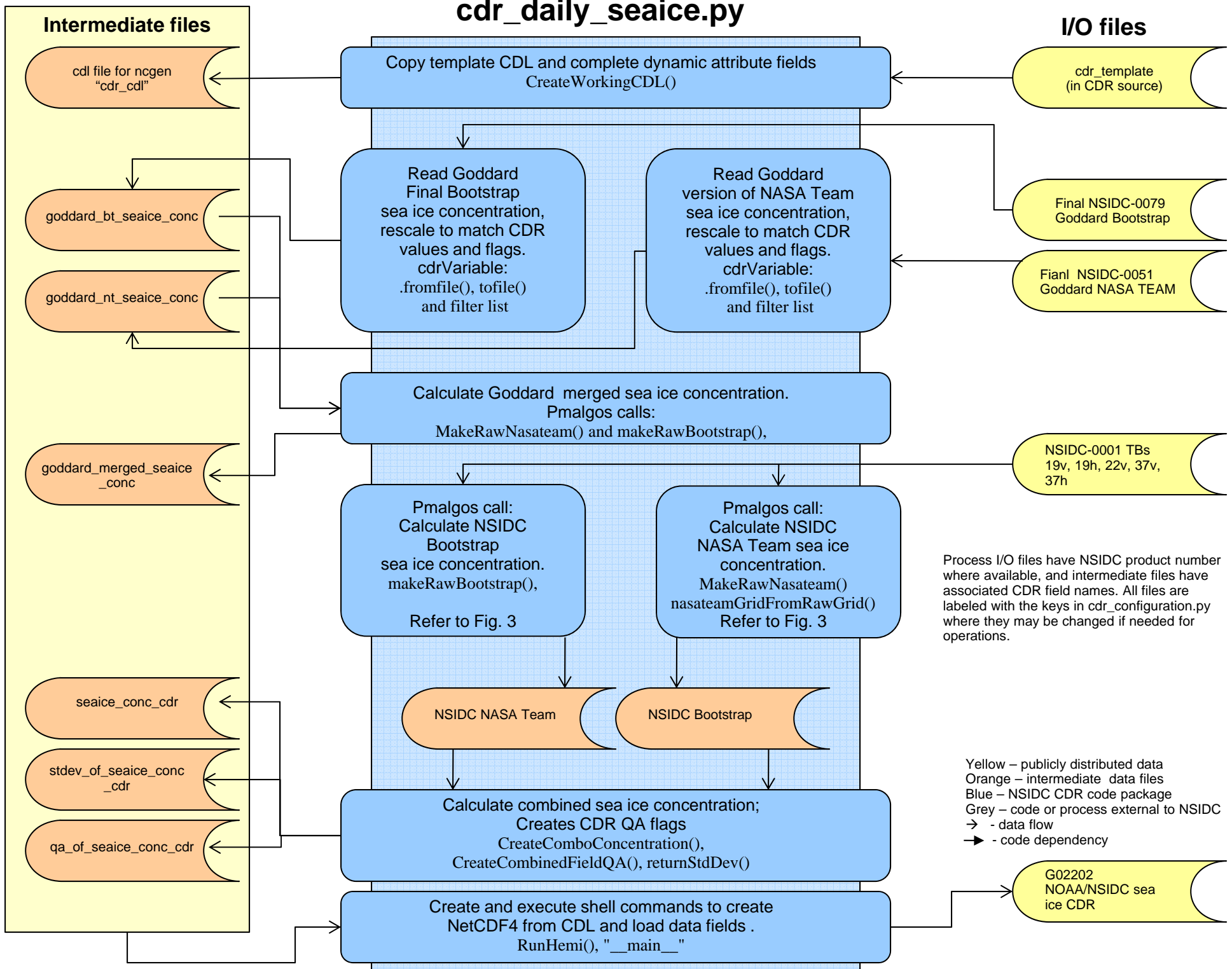


Sea Ice Concentration CDR Processing Flowchart



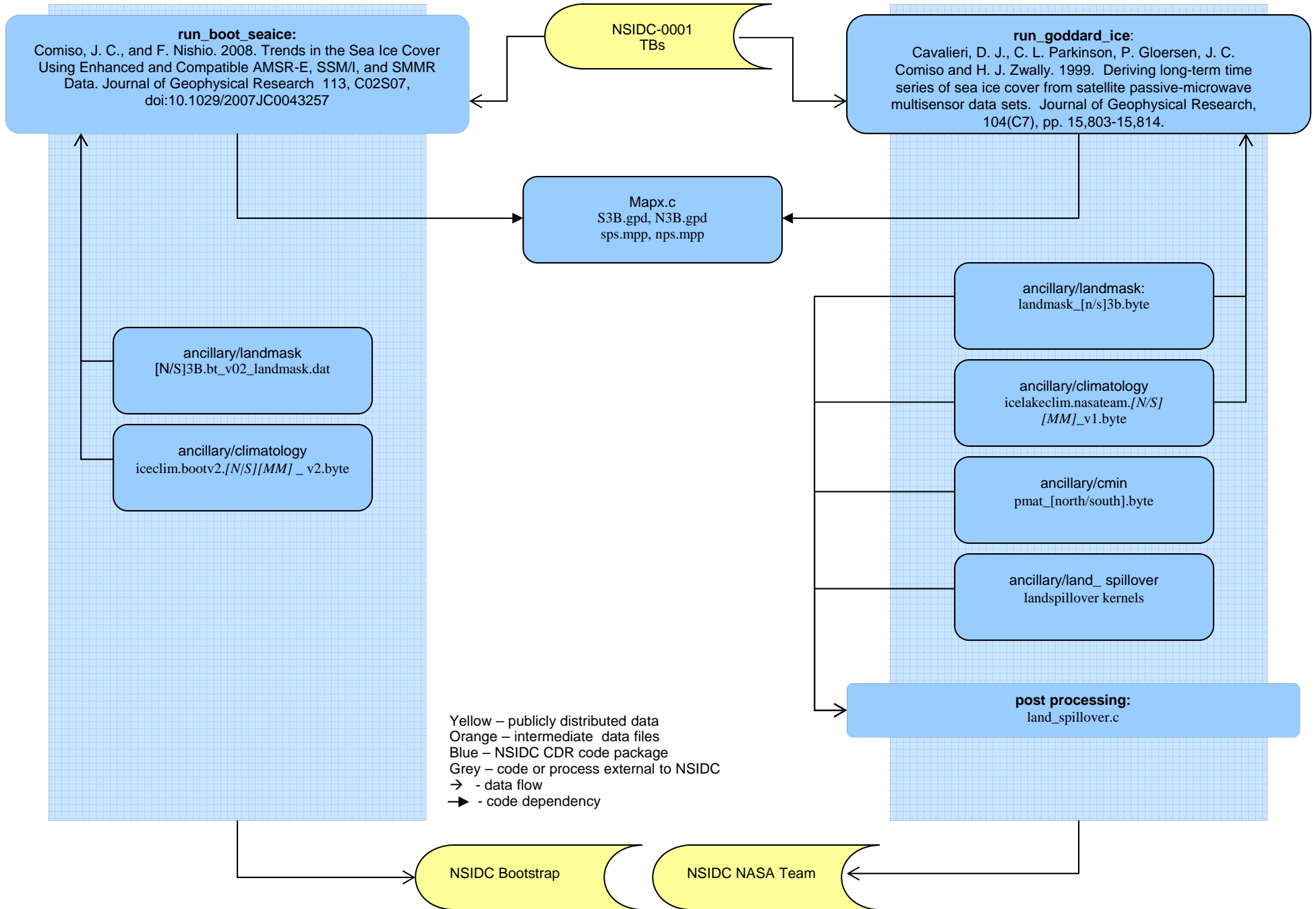
cdr_daily_seaice.py



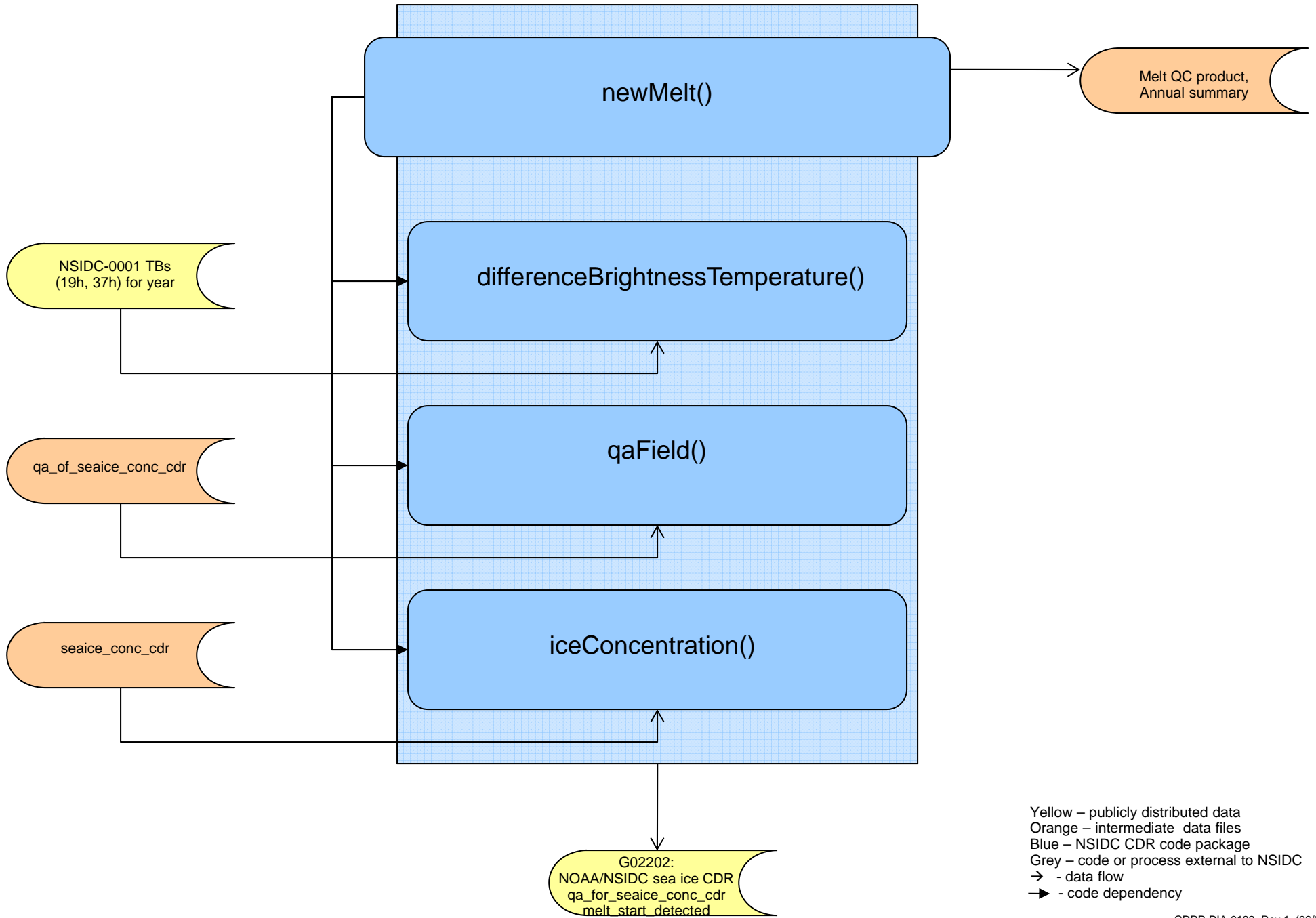
pmalgos.c

Bootstrap

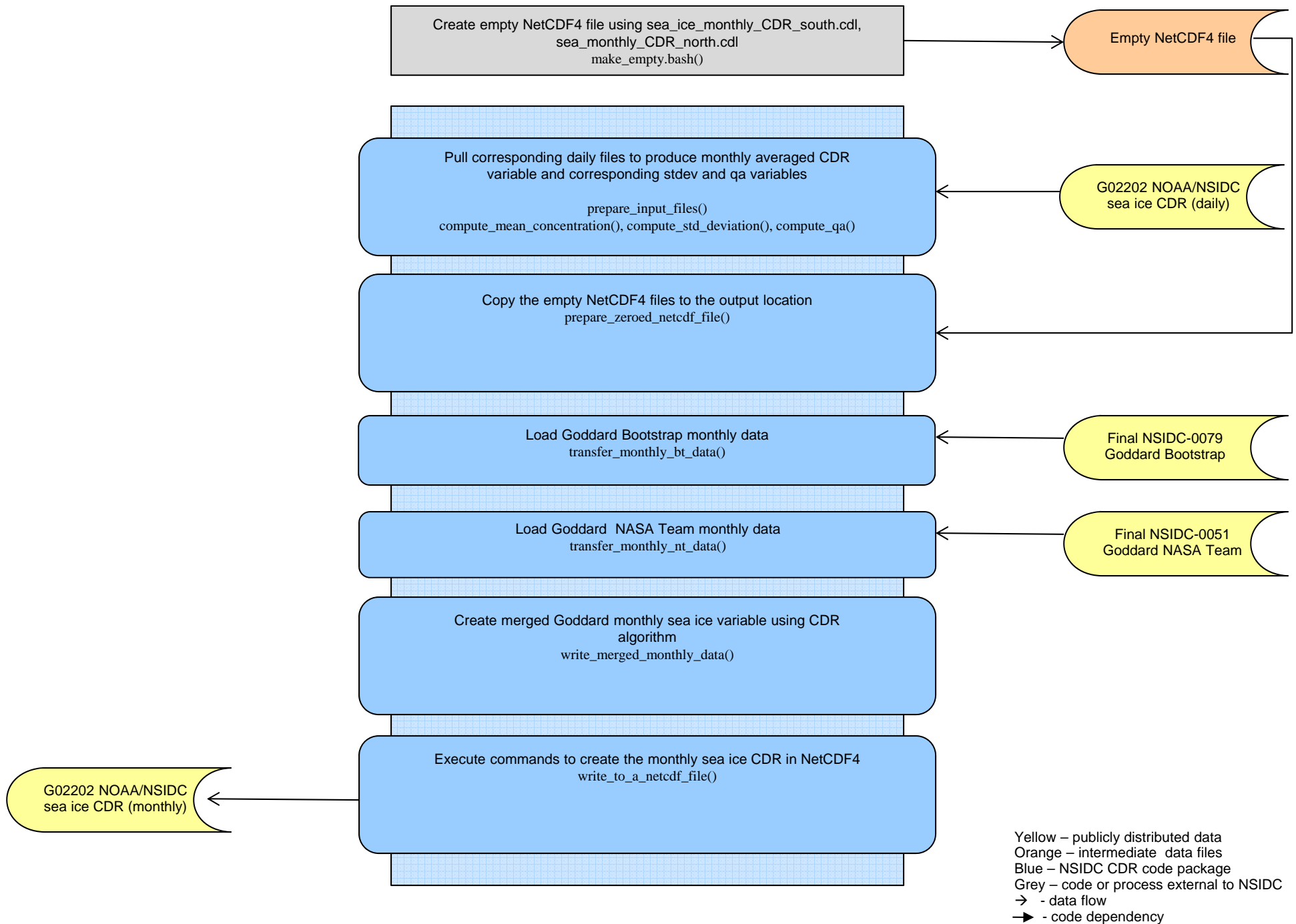
NASA Team



cdr_postprocess.py



cdr_monthly_seaice.py



Library Requirements

The following libraries are required to run the `cdr_daily_seaice.py` and `cdr_monthly_seaice.py`

Core Libraries:

netcdf-4.2 http://www.unidata.ucar.edu/blogs/news/entry/netcdf_4_2_release

hdf5 1.8.8

<http://www.hdfgroup.org/ftp/HDF5/prev-releases/hdf5-1.8.8/src/>

gzip 2.1

<http://www.hdfgroup.org/ftp/lib-external/gzip/2.1/src/>

Python Libraries:

numpy 1.6.1

<http://sourceforge.net/projects/numpy/files/NumPy/>

netCDF4-python 0.0.9

<http://code.google.com/p/netcdf4-python/downloads/list>

unittest2 0.5.1

<http://pypi.python.org/pypi/unittest2>

Note: Core libraries must be installed prior to the use of netcdf4-python library.